

# Bain Reserve

## Playspace and park infrastructure upgrade



Moreland  
City Council

Consultation summary report

**Prepared by**

Deb Piattoni Landscape Architect

Open Space Design & Development Unit

14 December 2021



# Bain Reserve – playspace and park infrastructure upgrade

## Consultation summary report

**December 2021**

---

The playground at Bain Reserve is due for upgrade in the 2021-22 financial year as Council continues to implement the Moreland Play Strategy. Funds have also been allocated for additional park improvements through Bain Reserve.

---

### 1. Background

Council's Open Space Design and Development unit have conducted three consultation phases with the local community for Bain Reserve, these being:

- **Initial Consultation**

Council asked the community what they would like to see included in the upgrade for this small playspace.

- **Draft Concept Plan Consultation**

Using results from the initial consultation, Council developed a draft concept plan based on the community's initial input.

- **Revised Concept Plan Consultation**

The revised concept plan reflected changes to the draft concept plan, incorporating further feedback where possible. After receiving feedback, a final concept plan has been produced, closing the consultation and informing the community, prior to the team proceeding to detailed design.

#### Consultation timings:

Initial consultation: 24 June – 23 July 2021

Draft concept plan consultation: 17 September – 22 October 2021

Revised concept plan consultation: 11 November – 10 December 2021.

Final concept plan issued: 17 December 2021.

For both the initial and draft concept plan consultations, postcards were distributed to households within 0.5km of Bain Reserve, advising residents that they can provide feedback on Council's website, <https://conversations.moreland.vic.gov.au/bain-reserve>. Posters were also displayed at site for each of the consultation phases.

The revised concept plan shows a refined version of the draft concept plan and was displayed on Conversations Moreland as well as on posters displayed at site.

## **2. Initial Consultation Feedback Findings**

Council received 39 feedback responses to the initial consultation.

Feedback received in the initial consultation showed interest in having a variety of natural elements and adventure-style play, designed in particular for toddlers and younger children, of which there are many in the local area. A few respondents asked for elements for slightly older children as well.

Many asked for low fencing or a barrier treatment as protection from the two local streets.

Some asked for theming in the playspace and to incorporate artist elements if possible.

Many asked for a co-located gathering space and a few for a shelter over it, as well as some seats under shade trees.

## **3. Draft Concept Plan Consultation Feedback Findings**

The draft concept plan was developed in response to the initial consultation and poll. Council received 21 responses to the draft concept plan. Many of these elements will be considered as part of the revised concept plan and where budget allows.

Many respondents asked for equipment aimed more at toddlers and less at older children. One asked for some accessible play items to support their child.

Some respondents asked for fencing to be provided on the western side of the reserve (Merlyn Street) as well as the eastern side to prevent children from running towards the road. They have also asked for this fencing to be kept as low as possible to not interrupt views to the trees and garden beds.

One individual suggested sculptural elements could be included in the design. Another suggested an in-ground trampoline and a see-saw could be useful in this space.

A few individuals expressed the need for a shelter over the picnic area.

All were supportive of the additional proposed shade trees and nature-based play planted area with balancing logs. One respondent asked for planting to support native parrots that visit the area.

Some asked for water play and sand pit and examples quoted of large playspaces they have enjoyed visiting.

One respondent asked for a workout station though there is insufficient budget to support this at this stage. Fitness equipment stations can also be found at Martin Reserve in Hadfield.

One individual asked for a fenced dog park in this reserve. Dog parks will be addressed through a separate strategy rather than through a playspace upgrade. The nearest fenced dog park is at Richards Reserve, Coburg North.

## **4. Revised Concept Plan**

The revised concept plan reflects much of the feedback from the draft concept plan. The play equipment has been adjusted to suit toddlers in preference. This includes a junior combination unit with slides in place of the larger unit, aimed at a range of ages. An in-ground trampoline and see-saw have been included. The tunnel reclaimed from the original combination unit is provided near the cubby house.

Fencing has been modified to reflect feedback, by enclosing the playspace on both sides using a mixture of low fencing with large rocks as a barrier treatment.

The nature-based play area has been extended further, included within the fenced area, in addition to the balancing logs. This also includes weave poles reclaimed from the original combination unit,

all with different carved, painted and tactile treatments to engage young children as well as providing a type of sculpture. One pole includes height markers for children to measure how tall they are. The wobbly bridge reclaimed from the combination unit provides a walkway from the playspace to the nature-based play area.

The revised concept plan had 4 responses and most were supportive of the revised concept. Respondents from the earlier draft concept plan were satisfied that there was sufficient play equipment orientated at younger children as well as inclusion of an in-ground trampoline and see-saw.

Another asked if additional equipment can be provided for older children as well. There is limited budget and space to accommodate for both older and younger children in this playspace, though an additional small climbing unit has been included with older children in mind. There is also the table tennis table, in-ground trampoline and the swings which cater for older children.

There was a request for fitness equipment (especially for upper body strength). There is not enough budget to provide fitness equipment stations this stage, though the newly added small climbing unit can also serve to support this need. Two fitness equipment stations can also be found at Martin Reserve, Hadfield which is close by.

One request asked for a dog park. Dog parks will be addressed through a separate strategy rather than through a playspace upgrade. The nearest fenced dog park is at Richards Reserve, Coburg North.

## **5. Final Concept Plan**

The final concept plan was presented on 17 December 2021.

## **6. Next Steps**

The community feedback to the proposed upgrade has been considered, resulting in revisions reflected in the final concept plan.

Detailed design and procurement will now be undertaken so construction can commence in early 2022.

## **7. Further information**

Any questions can be directed to Council's Open Space Design & Development Unit via email [openspace@moreland.vic.gov.au](mailto:openspace@moreland.vic.gov.au) or by phoning 9240 111.

## 8. Appendix

Below shows all feedback received from the community for each stage of consultation for Bain Reserve.

### 8a Initial Consultation



Figure 1: Initial Consultation poster displayed at site.

## Bain Reserve Playspace upgrade 2021/2022 Initial consultation

Council is upgrading Bain Reserve playspace and gathering space in Merlyn Street, Coburg North. This is part of the playspace renewal under the Moreland Play Strategy 2016-20.

What would you like to see in this upgraded small park? Your input can help shape the concept design.

Have your say at:  
<https://conversations.moreland.vic.gov.au/bain-reserve-playspace>  
or phone Council on 9240 1111

Feedback closes on 5pm 23 JULY 2021



Figure 2: Initial Consultation postcard issued to households within 0.5km of site.



## 8b Initial Consultation Responses

The following are responses to the initial consultation from 24 June – 23 July 2021.

Screen Name	Title	Description
Grace	Water play, nature play, fence, age and ability inclusive.	* A low fence around the park with gates, Some under cover tables and chairs, Please try to include as many natural elements into the park design as possible, rocks, logs, native plants., Water play, A basketball ring and play equipment for older kids, Retaining space for community events
Wren	Small kids and toddlers	Please update and make this an adventure playground awesome for small kids and toddlers. Would even be good to have a low-lying fence around the playground with benches outside as they tend to run all over the place and it would be great to not have to worry about them and have to chase them when they see the buses as it's close to the roads. I'd also like to see the BBQ area shaded
Matt	Above all, make it fun!	<p>The current playground is perfect for kids from a very young age (1+) so I'm hesitant to lose it as it is very hard to find parks for kids that young (but honestly, it's falling apart, so I welcome replacing it). I also understand that as kids get older they want different stuff, so it'd be cool to see options for kids of different ages.</p> <p>PLEASE don't buy and install an off-the-shelf playground. They are rubbish. Examples: New playground in Pentridge is already falling apart and similar to newish playground in Hosken Reserve. Both are so poorly designed that some sections are difficult for adults to climb up due to being too far off the ground.</p> <p>I urge y'all to look at the work from Jeavons (<a href="https://jeavons.net.au/">https://jeavons.net.au/</a>) for the kinds of playgrounds we could be proud to have access to in Merlo.</p> <p>Make it creative and not just cookie cutter. Make it nature-based, with shaded picnic areas! Maybe a legal mural wall for street artists to paint on legally? Maybe there are other types of public art we could consider? It's a creative area so let's embrace it!</p> <p>Additionally, I'd like consideration for alternative play areas, but these might be more suited to the north end of the park near Boundary Road: Pump track for scooters/bikes, Skate park, Half-court basketball court</p>
Katkat	Incorporate sculptural elements to reflect Merlo's artistic side	<p>I think that this is a great opportunity to extend the 'arts precinct' vibe in Merlynston by having impactful and possibly quirky sculptural elements in the playground design. This would build on the beautiful murals and quirky mosaics throughout the linear parks which have been contributed to by local creatives. Would also love to see the playground incorporate a lot of timber/elements that are cohesive with nature (we celebrate sustainability in this area!).</p> <p>Great examples of playgrounds with sculptural/artsy wow factor and integration with nature are: Donnybrook gumnut playground, Golden sun moth park Craigieburn, Deep creek eco playground, Harmony park Officer, Gardiner Reserve, North Melbourne, Fitzroy Adventure playground. I also wonder if some of the creatives in the industrial estate could contribute and have some of their work featured, like A Blank Canvas or the place with the metal sculptures near Pallett Street.</p>

Screen Name	Title	Description
Clare	Nature incorporated, basketball ring	Incorporate more nature elements, native grasses, native flowering bushes, include water play, big rocks, tree logs to walk along, build the equipment with natural elements, avoid plastic as much as possible. Include an Acknowledgement of Country. Add some contours, how about a little hill the kids can climb up, with a slide down, the current space is so flat. The big existing trees are gorgeous and provide great shade, but so much more diversity in native plants can be added under them. For the older kids, can a half basketball court be included. Thank you.
Ian	Thinking of the Children's Future	<p>Can we as a community start planning for the long term, please?</p> <p>We know population density is due to increase, (its both coalition &amp; ALP policy.) We know that temperatures will increase. Our existing emissions have locked that in.</p> <p>Imagine 2030's a living green oasis of playful kids, giggling and squealing &amp; playing chase while others swing to the heavens.</p> <p>Kids need dirt to play in. Particularly apartment dwellers. Sand pits end up being kitty trays. Bring back dirt! They need shading trees to cool their playgrounds and bushes to hide behind for hide &amp; seek. An elevated platform for parents so that safety can be observed could deal with carer anxiety. To keep the munchkins safe let's ring the reserve in dedicated bike-paths. Multi-purposing &amp; making it safe to ride there in the first place. Check the stats but I'm confident bikes vs kids incidents have killed a lot less kids then kids vs cars!</p> <p>Our plastic pollution is killing the planet. Kids need this planet &amp; plastics leeching out poisoning their little growing bodies. Could we stop poisoning kids because it's cheaper? How about this incredible stuff called wood! A 110% recyclable playground should be the aim!</p> <p>Can we select trees that will grow big enough branches to have shaded swings from the branches. Best swings ever!!!</p> <p>Place built swings under parasols in area where the trees will mature in the interim. Then when big enough tree swings!</p> <p>How fab is that! Again can we plan for the future. Trees, shrubs, native grasses all encourage birds &amp; lizards. They support abundant life. Who doesn't want future kids to have the wonder of watching skinks warming in the morning sun &amp; birds feeding chicks in a nest? It could inspire our own Jane Goodall or David Attenborough.</p> <p>Bubblers for drinking cause of increasing heat and a tiny toddlers picnic table setting. Because that will encourage littl'uns to socialise.</p> <p>Please above else ban plastic grass that toxic stuff looks like filth, in way too many school yards.</p>
SED	Babies and Toddlers	<p>There seems to be a huge increase in babies and toddlers in the area, so including something catering to this age group would be amazing. It also makes logical sense as the park is next to the maternal health centre and is a good meeting point for new mothers.</p> <p>I'd also love to see a basketball ring for big kids like myself!</p>
Neighbour	Nature play	We would love to see water play features (pumps, dams, rocks) - surrounded by trees, so there is a space to go on hot days (which are increasing due to the climate emergency). We would love to see more native vegetation planted, a playground made from natural materials, more climbing features and opportunities for children of all ages and abilities to connect with nature. I loved another neighbours suggestion about creating some kind of connection to the local Indigenous community and culture, and agree that the traffic in the area can be unsafe at times.
Shel	Water play and court	Would be great if there were interactive water play features such as pumps, fountains. And for older kids a small bike trail, where you can teach kids safe road skills (with stop signs, crossings, etc).

Screen Name	Title	Description
Warran	Warran	A more interactive and physical playspace for primary school aged kids similar to the one at Pentridge. Can go alongside the current toddler friendly playspace. Couple more picnic tables in the space would be great too Does this also include balin reserve?
Brenda	Safety as a priority	There is a great deal of traffic around this area, with further development only adding to this issue. It is extremely common to find cars speeding down Merlyn Street and the majority of cars do not stop at the stop sign. Especially during the school drop off and pick up times, and those hoping not to miss the train. There is one spot at the north end of Merlyn street that presents a blind spot often with the cars parked and it can feel very unsafe to cross the street. Please consider further ways to slow the traffic further and make it safe for pedestrians to navigate from the cafe and shops to the playground.
Brenda	A fun ninja style obstacle course	Please consider including in your design elements that could be used in a fun ninja style obstacle course for kids who love to climb, jump and swing from one thing to the next. It would great to see a combination of natural elements incorporated into this type of design as well.
A local resident	A playground that is inclusive to all	Please incorporate inclusive design elements into the upgrade of this playground. It would be fantastic to see elements that allow people of all abilities an opportunity to play in a safe environment.
Marissa	More lighting and playground upgrade	The lighting around the playground is terrible and it's very dark at night for those who walk through the park after catching the train. It would be great if there could be more lighting around the playground and board walk to ensure the safety of the community. The playground is old and outdated. There should be a complete playground upgrade to ensure that there are facilities for children of all ages
David	Balin Reserve and Bain Reserve ??	The google map implies that there are two reserves -Balin Reserve and Bain Reserve but they are joined. Is this correct ? Is the upgrade only at the area around Bain playground or the entire area ? I suggest improving the northern (Balin ?) area as an older play area. It currently has (barely) a cricket practice pitch. There is a huge amount of space to support say a half court and more.
Margaret	Drinking fountain and fencing	For the sake of the parents who must be constantly vigilant, please fence the part of the Bain Res which is designed to be used by young children. Please ensure the drinking fountain is inside the fence. The swings and see-saw are also used by adults so ensure they remain strong enough to take it. I see the boardwalk is not in the plan but the kids using it to skateboard should be protected from accidentally falling the half metre to the footpath below. Any canopy over the play area -to protect from Summer heat - should be removable.
Local	Acknowledge indigenous culture and history	Kids learn through play. I'd love to see an element included that acknowledges the rich history and culture of our Traditional Owners. This might be incorporated as an interactive story narrative, like at the museum, or interactive art work. You could employ and consult with traditional owners on how to bring this into the design.



Screen Name	Title	Description
Ruth	Wild water play	Near Anstey station is a new playground. It has elements of wild play. Especially a water pump, little river and dams. Hours of fun and the chance to cool down in summer without having to go to the pool. We love it and would enjoy having some of these elements under the trees in our Merlo park.
Katkat	Shelter, fence, toddler friendly and trains!	I enjoy that this is a playground suitable for toddlers, but really feel that a perimeter fence is needed with roads on three sides, and nearby buses and trains (which has previously excited my child to the point of running towards them to watch!). Not sure about this, but just throwing out there the idea of a space for viewing the trains passing by at Merlynston station/a train themed area. This is really enjoyed at Kensington "skinny park" near the train line. Like the idea of increasing age range of equipment, however would like a discrete area for toddlers so that parents can direct smaller kids towards that and relax a bit/not be needing to hover and equipment that is too advanced. Love areas that encourage pretend play E.g. "counter tops" for shops, little cubby type areas etc. Definitely need some good shelter there please!
Marisa	Love it but fence would be ideal	We visit this park several times every week with our kids as it's perfect for train- and bus-spotting and has a good variety of challenges on the playground. However, on many occasions I've seen kids sprint towards the road and so a fence on all perimeters really is much-needed addition - there's a lot of traffic, intersections and cars reversing on two main sides, and it's not a huge space so easy for kids to make it to the road in a short time!
Katie	Fully fenced	With two roads on either side of this playground, I would love to see it full fenced so parents can feel secure that their kids won't run into the road (especially parents of multiple kids). A bike path around the fenced area would be great I'm not sure what the deck area is for so reusing that space with picnic tables would be good. A flying fox that has a ramp for kids to walk up is good (so the parents don't have to be there to help them on) as well as a different type of climbing tower and monkey bars for older kids.
Bec Raniwala	Central location with lots of kids in neighbourhood	Water play would be amazing for summer time. Sandpit. Flying fox for young and old. Catering for older and younger kids. Keeping natural theme to fit in with lovely old trees surrounding park - timber etc. Scooter track for older kids. It would be wonderful to see this park revitalised and catering for the community more than it currently does.
Gayathri	Cater to older kids	There's not many playgrounds in this area that cater to older kids. It would be great if some equipment targeted to older kids were built in to this playground.
EmmaP	We love this park	With so many little children around, this is a well visited park. Would be good to keep the toddler focus, but with extra equipment for older kids. Love a previous idea of a flying fox. Also love the previous idea of a theme. Also, I don't know why swing sets are always facing directly into the sun, but this tends to make children have to shut their eyes on bright days. Having it tilted away from the sun and taking advantage of the trees shade in the afternoon would be better. The toilet there is great but often is squalid, as it was this afternoon.
Kas	Love that this park is good for toddlers	The reason I love this park is that it's one of the few in the area that is good for smaller children. My toddler really enjoys it because she can access everything. I think ideally parks should be appropriate for all ages, but I feel like every park we go to normally only has one or two things for toddlers. Would be great to keep this park as a toddler friendly one!

Screen Name	Title	Description
Lindamk	Make it suitable for all age group kids.	Currently it's suited more to toddler and pre -school aged. Expand it by adding more play equipment suited for school aged kids. Possibly add a flying fox, monkey bars, spider swing, climbing wall and climbing frame but also keeping similar to how it is now just making it more suitable to a range of ages (kids). I have a 2yo, 4yo and 7 yo. The 7yo suggested the above upgrade herself. It definitely needs some shade as it only gets afternoon shade. This playground definitely needs to be bigger as it can get busy at times. An extra swing would also be great as it's always the most popular thing and always has a wait. Another table with bench would be great also
JH	Wooden with a theme is a favourite	Above all else, fully fenced or mostly fenced is highly valued, as is decent shade. Would love if the upgrade could incorporate features from our favourite playgrounds including De Chene Reserve in Coburg, Victory Park in Ascot Vale, and Black Sapphire Pirate Ship in Aberfeldie. Common elements are they are all wooden with a playful theme (pirates/castle/maze) and challenge all age groups. Lots of elements to climb are great, with slides at the top like Gumnut Park in Donnybrook- but that's a much larger space. Perhaps a scooter/bike path that encircles the play area with little speed bumps.
dev_vine	Copy Eltham North playground!	Eltham North playground has undercover play area, water play, sand play, climbing, slides - it's the perfect playground! It would be great for this area to be more of a community hub with some more picnic tables too.
Bijou	Waterplay and all ages	Moreland is distinctly lacking in waterplay so that would be amazing. But leaving space for community events and movie spaces. Fencing around playground is great for safety. A huge adventure playground with slide. More plants or raised beds, space to have small gatherings more tables. The decked area I believe was a missed opportunity, should have been a skate bowl or something that would see more use for all ages. There are some epic parks outside of Moreland it would be great to have one here so we don't have to travel.
Eve M	Older kids and adults	Some equipment for older children would be good. More picnic tables would be awesome. Such a gorgeous park. Would be nice for it to be more useable. Perhaps some shade cloth over the playground for summer. Also, bring back the movies in the park. But this time, do so on the clearer end near Boundary Rd.
Jo H	Older kids equipment	It would be great to have some play equipment geared to older kids (8-12) such as a net/disc swing (my son's favourite!), flying fox, rock climbing wall, and more picnic tables/seating for outdoor gatherings :)
jess88	Suitable for all ages	It would be great to have a few more picnic tables and I agree with a below comment about shelter for the BBQ area. Austin Crescent Reserve in Pascoe Vale has a great new playground. I would like to see something similar as it does accommodate to toddlers and above. Equipment such as a net swing, flying fox, net tunnel, rock climbing wall, different sized slides, sensory wall and a bucket swing (for the toddlers) would be amazing!!
Celia	Playground	Great news :) Would love to see a pump/scooter track. We drive our kids to access these and the playgrounds we go to are always packed. Also would love a mix of toddler/older kid equipment. I love how suitable it is for little kids but agree some more challenging things would be great to (love flying fox idea). Waterplay, ropes and also nature/imaginative play (like cubbies, gardens, statues).

Screen Name	Title	Description
PeterVB	Older kids playground	It would be great if the play area could be upgraded to accommodate older kids (8-12), rock climbing walls, swings, monkey bars. Similar to Liner reserve and Parker reserve. Maybe a zip line!
tatiana_stephens	Nature, water play	I'd love to see a nature/water/mud play area for kids of all ages (similar to the design at the royal children's Hospital playground)
GAYNOR.richmond	Fireman pole and spidey swing	Eight (nearly nine) year old son would like a fireman pole and a spidey swing please. And a flying fox, if budget allows!
gaynor_richmond	Climbing equipment for older children	Current playground is very much geared towards toddlers - would be good to have some equipment more appropriate for older children.
gaynor_richmond	More picnic tables and group seating	Replace existing picnic table and add extras, with more group style seating
gaynor_richmond	Sheltered BBQ area	Would like to have shelter provided over and around the BBQ area.

## 8c Draft Concept Plan Consultation

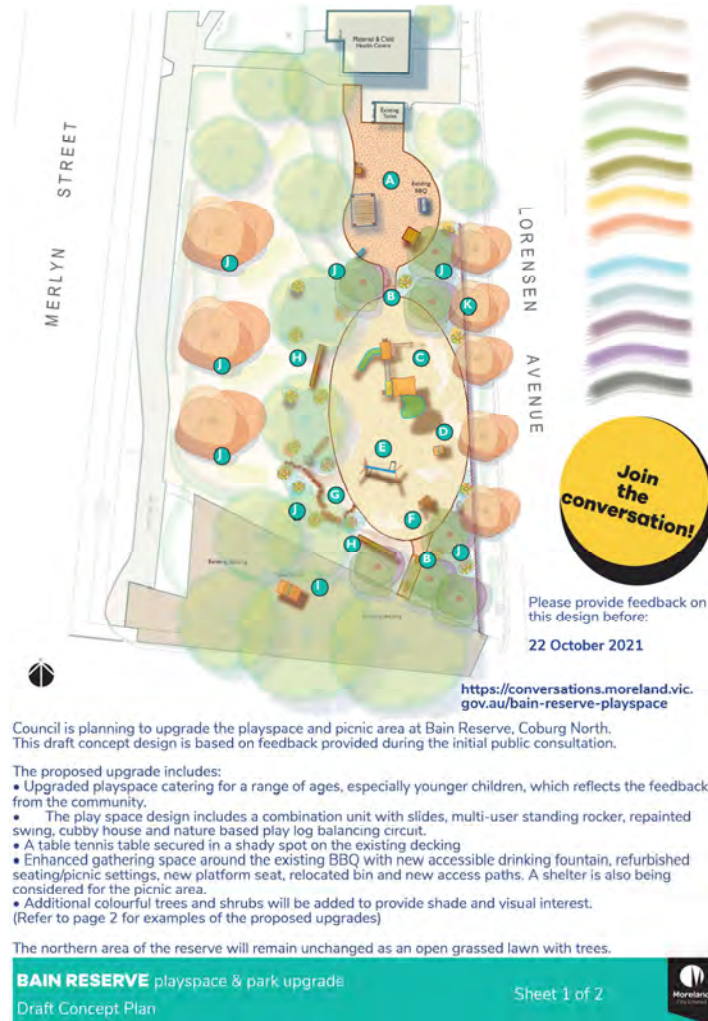


Figure 3: Draft Concept posters displayed at site.



## Bain Reserve Playspace & park Upgrade Draft concept consultation

Council is upgrading the playspace and adjacent area at Bain Reserve, Coburg North.

We would like your feedback on the draft concept plan.

Have your say at:  
<https://conversations.moreland.vic.gov.au/bain-reserve-playspace>  
or phone Council on 9240 1111

Feedback closes on 5pm 22 October 2021



## For more information contact Council's Open Space team:

Email: [openspace@moreland.vic.gov.au](mailto:openspace@moreland.vic.gov.au)

Phone: 9240 1111

<https://conversations.moreland.vic.gov.au/bain-reserve-playspace>



### Moreland Language Link

廣東話	9280 1910	عربي	9280 1913
Italiano	9280 1911	Türkçe	9280 1914
Ελληνικά	9280 1912	Tiếng Việt	9280 1915
हिंदी	9280 1918		
普通话	9280 0750	All other languages	9280 1919
ਪੰਜਾਬੀ	9280 0751		

Figure 4: Draft Concept postcards issued to households within 0.5km of site.

## 8d Draft Concept Plan Consultation

The following are responses to the initial consultation from 17 September – 22 October 2021.

Screen Name	Title	Description
Jo	Toddlers lose a great park	We currently take 3 kids under 4 to Bain and they play happily with all the equipment there. There's enough things that even when it's busy there's enough stuff for kids to not be in the way of each other. The suggested equipment does not show much promise for toddlers or for giving many kids access to play equipment at once. I hope the equipment will be reconsidered to allow for access to a wider age group and for kids with varied abilities.
JP	Missed opportunity	The proposed design is somewhat of a missed opportunity for council (typical Moreland!) Not only does it not really cater for the younger kids which Bain currently does ... but it doesn't cater for any children with disabilities! I'd be much happier seeing Bain reserve either stay as it is ... and or money being spent on a park such as the one in my link below - Mill Park - All Abilities Park! It's so amazing out there, and there's no reason Moreland can't have an attraction like this for our kids! <a href="https://explorewhittlesea.com.au/discover-posts/all-abilities-play-space-in-mill-park/">https://explorewhittlesea.com.au/discover-posts/all-abilities-play-space-in-mill-park/</a>

Screen Name	Title	Description
JP	Design only caters for older kids	There's very little play equipment in the new design that I'd let my 2 year old play on. It all seems too high, and seems to be targeting kids 5 and up! My son loves Bain reserve as it is because he can play on most things! And although the plan looks nice it's not ideal for kids of that age!
CT	Shelter over seating	Covid will be around for a while and meeting outdoors will continue to be the safest way to see family and friends. With Melbourne weather I think it's essential to have a shelter over some of the seating. Similar to the park on West street in Brunswick. I often go there because of the shelter. Also, I'm sure it's been considered but the art on the playground should be by a local artists and perhaps represent the traditional owners of the land.
Slugstar	Further Suggestions for Bain Reserve Playground Upgrade	I have lived in Merlynston all of my life and Bain Reserve has been a huge part of my childhood and adult life. This upgrade draft is very good however I would also like to see incorporated into the final design a See-Saw like the one in Raeburn Reserve in Pascoe Vale, a Trampoline like the one in Palazzolo Park in Willow Grove, Coburg (pictured) and an absolute must for children's safety, a full perimeter fence erected along Merlyn St on the western side of the reserve to prevent children running out onto to Merlyn St which is very busy with cars, trucks and other vehicles all day.
Susan	A workout station	similar to the bigger one at Coburg station track for teens.
Local resident	Fencing	Please keep any fencing really low ( one metre at most) !!!!! It's nice for everyone to enjoy seeing the park with its beautiful trees from all angles. It is for everyone to enjoy not just those using the play equipment.
Natalie	Feedback	Sheltered picnic tables are a must have, with the Australian sun and sudden Melbourne rain downpours. Also this is right next to the maternal child health nurse centre, so having a sheltered area for new mums to chat would be a wonderful addition (babies under 6months are not recommended to use sunscreen and need to be kept under cover. A large circular pergola with bench seats would be wonderful.
Clare	Can't wait	Really happy with the plan, thank you. My kids are excited!
Karis	Feedback	The new plans look great! It would be good to also ensure disability access and play equipment for kids with disabilities too. We have a daughter with cerebral palsy and this is our main park.
Simone	Fence and age issues	The plans looks awesome! Love the cubby house, incorporation of nature play space and fence. However fence is on the wrong side - needs to be beside the bus stop, not the cul de sac! Also it's a great playground for older kids but not much for toddlers. Suggest add a low playground equipment, like a renovated version of the current playground please.



Screen Name	Title	Description
Tim	Fence location feedback	I think you should consider a fence on the western side of the reserve as well as the east. This is where you see the traffic/buses and the most potential for injury.
Manisa	Looks good but example play structure doesn't cater for toddlers	I really like a lot of the aspects of this design - the nature play areas and additional plantings will be lovely, and a refurbished gathering area (particularly with some shelter) will make the space more usable. I also like the idea of the table tennis table. My main concern is that the example play equipment is absolutely not suitable for toddlers - please choose a design that toddlers can access and use with minimal parental involvement! The current play equipment is so great for this and is the only one in the area (e.g. Sanger Reserve only has a slide and the play structure at Hosken Reserve is only suitable for kids about 3yo+). I'm also not sure of the rationale of only putting the fence on the Eastern side; there's much more traffic on the other side.
Ren	Fence	Only thing I'd suggest is to have a really low fence that surrounds the young play equipment. Something high enough to contain under 5 year olds but low enough that adults can jump over if needed. Keep the benches on the outside of the fence so parents can sit if needed but still watch.
Suriya	Some suggested changes	More shelter/shade over the play equipment would be great. Some steps up to the small slide are needed for kids too small for or not good at climbing. Is there scope to add water play or sandpit? Fencing all the way around would make it safer.
Greg	Moreland Nature Plan - biodiversity	I hope some actual expertise will be applied to the proposed plantings, inclusive of an assessment of existing species that frequent the Reserve. These plantings should be complementary to the entire Reserve & not just the playground. There are several existing red-rumped parrot nesting sites & it's one of the few areas they seem to be holding their ground against the aggressive noisy miners, wattle birds & rainbow lorikeets. So rather than plant yet more gum trees & some "pretty plants" actually read the Moreland Nature Plan (section 5.8 is a good start), consult some actual experts (despite the mayor/councillors view expressed on Hosken's plastic soccer pitch this involves more than just Googling it!) and actually protect or enhance the species under pressure. Maybe some red-rumped parrot nesting boxes near the playground would encourage the kids to understand the importance of biodiversity, nature & the environment? Anything to help save the loss of all the small birds is greatly needed too. I agree with other comments about a fence on the West & South sides as traffic in Merlyn St is dangerous & the buses from Merlyn St to Lorensen Ave is a traffic nightmare!
Safe and Fun	Fencing adjustments	Great to see some fencing in the draft plan, but for this to be just on the east side makes absolutely no sense. The majority of the traffic is in Merlyn Street, which includes many cars that drive well over the speed limit, ignoring the stop sign at Orvieto street. Please adjust the plan to provide additional fencing on the west side.
Katie	More for the toddlers would be good	I feel that this design loses a number of the elements that are currently great for toddlers at Bain Reserve. For the under 5s I think the main play equipment in the design will be quite challenging and need a lot of supervision from parents (not a restful visit!). Would be great to have a section with more elements geared to the younger children. The cubby house and rocker look good. Two slides is great but will be difficult for a lot of younger kids to access a slide. Capp reserve in Brunswick does well with catering for younger and older kids. Will glazed bricks for hopscotch be particularly slippery if

Screen Name	Title	Description
		wet? I would prefer more play elements/e.g. water play elements rather than a table tennis table. I think they would likely get more use. The shelter, extra planting and fence are all good additions. I'd like to see some art or sculptural elements incorporated to give the space a bit of character.
Via email		<p>I am a Merlynston resident (Sharp Grove) and take my 2-year-old to play at Bain reserve most days.</p> <p>First of all I welcome the improvements council is looking to make to the park, BUT I honestly don't think the existing playground needs to be fully removed and changed that much.</p> <p>Has whomever drafted this design ever been to Bain reserve and see the ages of children playing there??? Because based on the design alone, it seems like they have not. Considering the park is adjacent to the Maternal and Child Health centre, wouldn't it make sense for the park to feature equipment more suitable for younger children ... i.e. who attend the centre... mainly toddlers??</p> <p>The website says that the proposed playground caters for "a range of ages"... but it doesn't really target younger kids ... i.e. 2 and up ... who are able to use the park as it is now, but the large majority of the equipment would not be suitable for them in the plan ...although it looks nice! It's great for ages 5 and up (same as the playground at Hosken Reserve) ... but there's very little id feel comfortable putting a toddler on. And at the moment, toddlers are whom Bain Reserve is currently targeting, and are who use the park most... during the day, because they're not old enough for school as yet!</p> <p>Please have a look and use the Mill Park - All Abilities park as a reference. It's amazing, and caters for all ages and all abilities!</p> <p><a href="https://explorewhittlesea.com.au/discover-posts/all-abilities-play-space-in-mill-park/">https://explorewhittlesea.com.au/discover-posts/all-abilities-play-space-in-mill-park/</a> And its genuinely so much better than any park we have in Moreland!</p>
Via email		<p>Please don't wreck the existing trees. The amount of time and money spent on the unnecessary boardwalk has been a huge waste.</p> <p>I like the idea of the family friendly area to hopefully keep out the idiots on skateboards and graffiti taggers.</p>
Via email		I would love to see an enclosed off the lead dog area in Bain Reserve, North Coburg. I am thinking about getting a dog and this Close park wold make having a dog much easier. There are a lot of people in our area that live in small townhouses and have dogs.

## 8e Revised Concept Plan Consultation

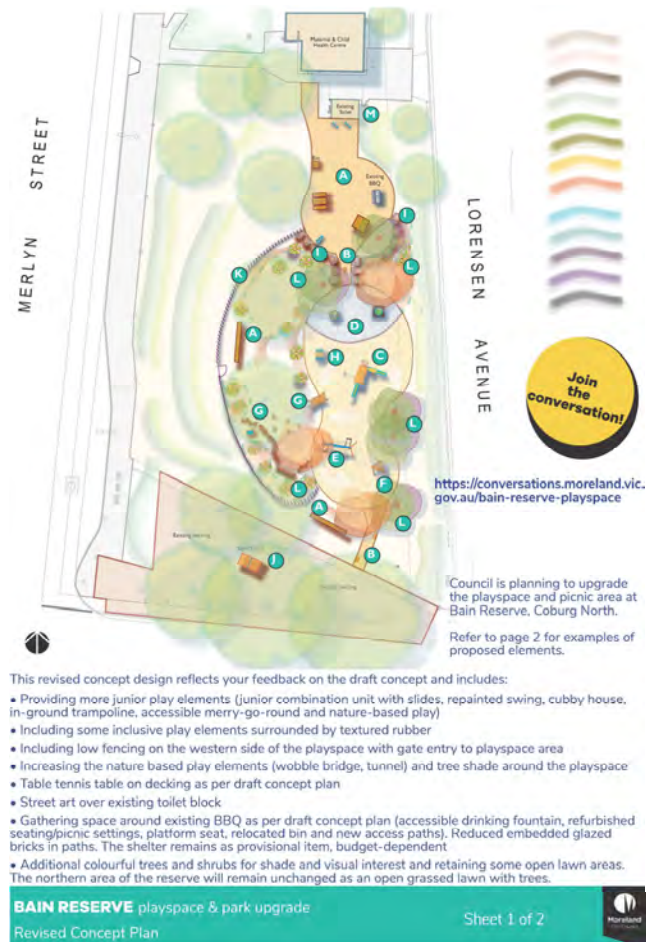


Figure 5: Revised Concept Plan posters displayed at site.

## Bain Reserve Playspace & park Upgrade Revised concept consultation

Council is upgrading the playspace and adjacent area at Bain Reserve, Coburg North.

Please provide your feedback on the revised concept plan:

<https://conversations.moreland.vic.gov.au/bain-reserve-playspace>  
or phone Council on 9240 1111

Feedback closes on **5pm 10 December 2021**



**For more information  
contact Council's Open  
Space team:**

Email: [openspace@moreland.vic.gov.au](mailto:openspace@moreland.vic.gov.au)

Phone: 9240 1111

<https://conversations.moreland.vic.gov.au/bain-reserve-playspace>



### Moreland Language Link

廣東話	9280 1910	عربي	9280 1913
Italiano	9280 1911	Türkçe	9280 1914
Ελληνικά	9280 1912	Tiếng Việt	9280 1915
हिन्दी	9280 1918		
普通话	9280 0750	All other languages	
ਪੰਜਾਬੀ	9280 0751	9280 1919	

Figure 6: Revised Concept postcards issued to households within 0.5km of site.

## 8f Revised Concept Plan Consultation Responses

The following are responses to the revised concept plan consultation from 11 November – 10 December 2021.

Screen Name	Title	Description
Slugstar	This is a Well Balanced Revised Concept for Various Age Groups	This newly revised recent draft plan caters for all ages from infants and toddlers through to younger children with all the playground equipment in this proposal. The western fence provides safety for everyone, more communal gathering space and seating is adequate while the planting of new trees and shrubs will give Bain Reserve a much-needed better picturesque appearance. Thank you to the council and designers for listening to the initial feedback that was provided and incorporating the community's suggestions into this well revised design. Well Done!
Jerry	Dog park a possibility?	The Lost Dogs Home quoted Moreland as the council area with the highest number of dog adoptions for the year. Why not celebrate by providing a small dog park at the north end of the reserve beyond the flats?

Screen Name	Title	Description
SamJ	Exercise Equipment	Please accommodate older age groups as well by having exercise equipment like Bars / parallel bars put in so everyone can use this communal place
GaynorR	Accommodating Kids Age Ranges	Following complaints from parents of toddler-aged children, the revised concept plan now has more equipment catering to this age range but the requirement for equipment for older children seems to have been lost (other than the ping-pong table). Surely there's enough space and funding to cater for both?



## 7d Final Concept Plan

The Final concept Plan is displayed on a poster at site and on Conversations Moreland.

