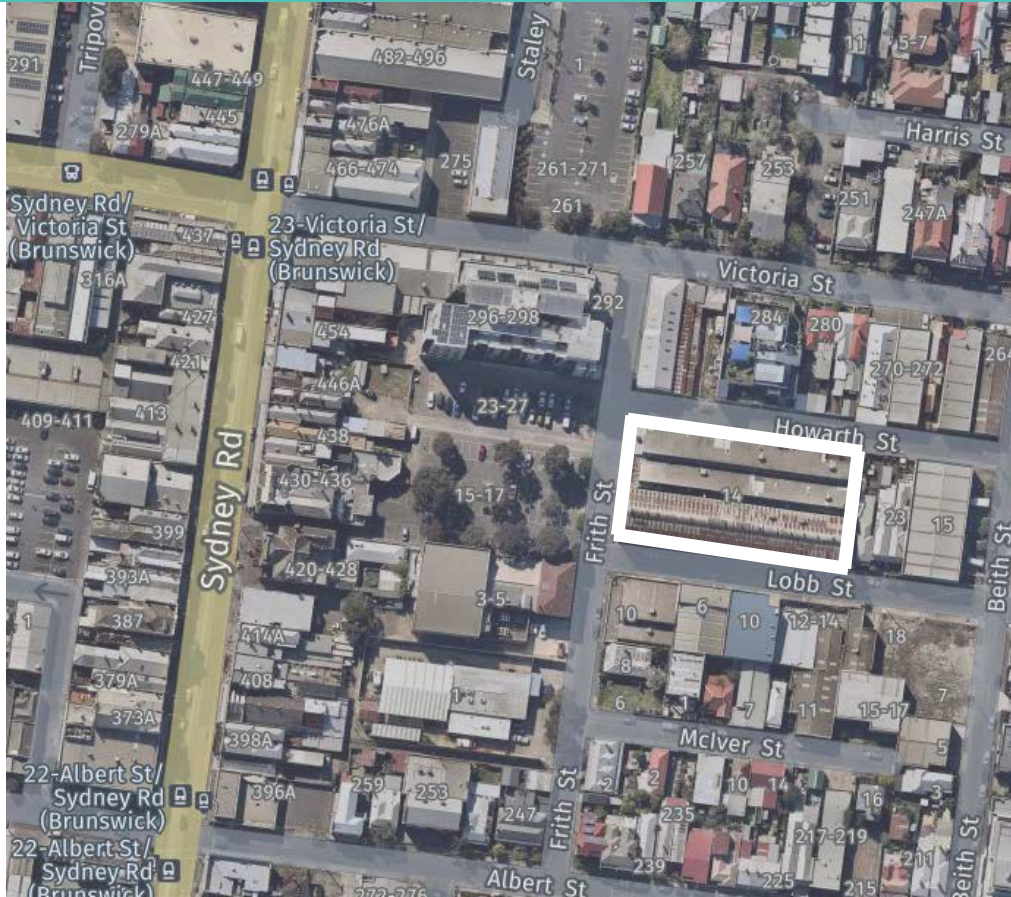


Introducing 14 Frith Street

A new Park Close to Home in Brunswick



14 Frith Street, aerial view from Sydney Road



Location plan



Facade of former steel foundry, Frith Street frontage



Interior view of former steel foundry

The story so far

A Park Close to Home is a Moreland City Council initiative to create new parks in areas with limited access to public open space.

Located in central Brunswick, the site at number 14 Frith Street is a unique opportunity to provide open space in the inner-urban area abutting the Sydney Road shopping strip.

This area has a rich industrial history of factories and manufacturing. The buildings on the site were formerly a steel foundry and the Fletcher Jones clothing factory.

A draft concept plan has been prepared to share with the local community for input and feedback.

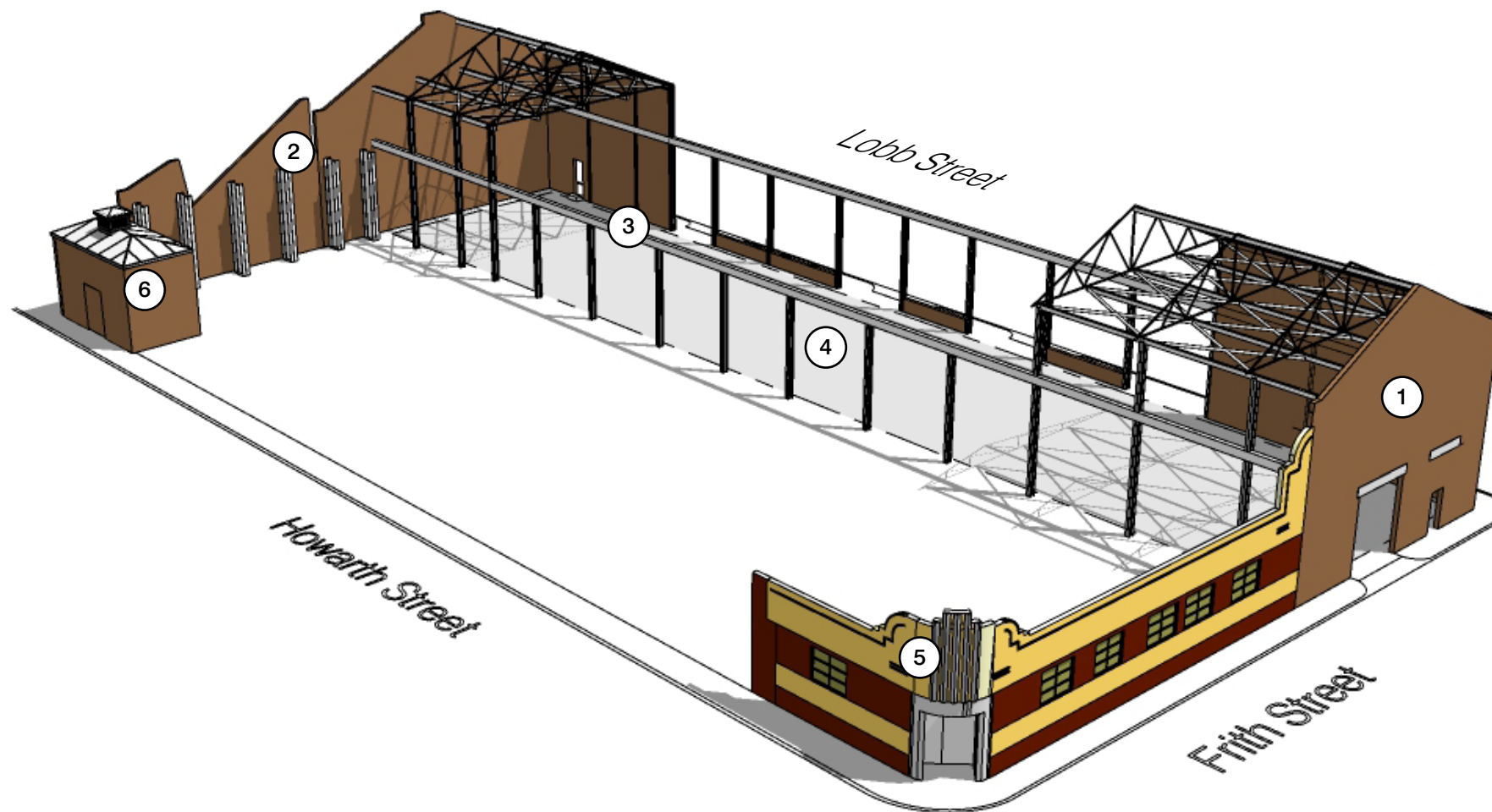
In this proposed design for the park, elements of the buildings have been retained to preserve and enhance the site's heritage value.



Park Close to Home - Frith Street Brunswick is supported by the Victorian Government through the DELWP Local Parks Program

Preserving History

Celebrating the heritage of Brunswick's once prolific steel industry



Heritage values

It is important that the former industrial uses of the site are identifiable in the design of the new park. These elements are numbered below:

- ① The west facade along Frith Street of the former foundry, and part of the facade along Lobb Street.
- ② The east facade of the foundry, and the sawtooth roof profile of the former factory.
- ③ The steel gantry and roof trusses of the former foundry indicate the headroom for overhead travelling cranes used in the handling of molten metal.
- ④ The concrete floor of the foundry indicates the size and scale of factory operations.

Also retained as important examples of heritage built form are:

- ⑤ The former Fletcher Jones offices on the corner of Howarth St.
- ⑥ City of Brunswick Electricity Supply Transformer Station.



Fletcher Jones sign on Frith St



Electricity Sub-station



The corner of Frith and Lobb Streets



Jardins les Fonderies in Nantes, a former steel foundry converted into a public park



Park Close to Home - Frith Street Brunswick is supported by the Victorian Government through the DELWP Local Parks Program

Park Close to Home - Frith Street Brunswick

Artist's impression, viewed from north east

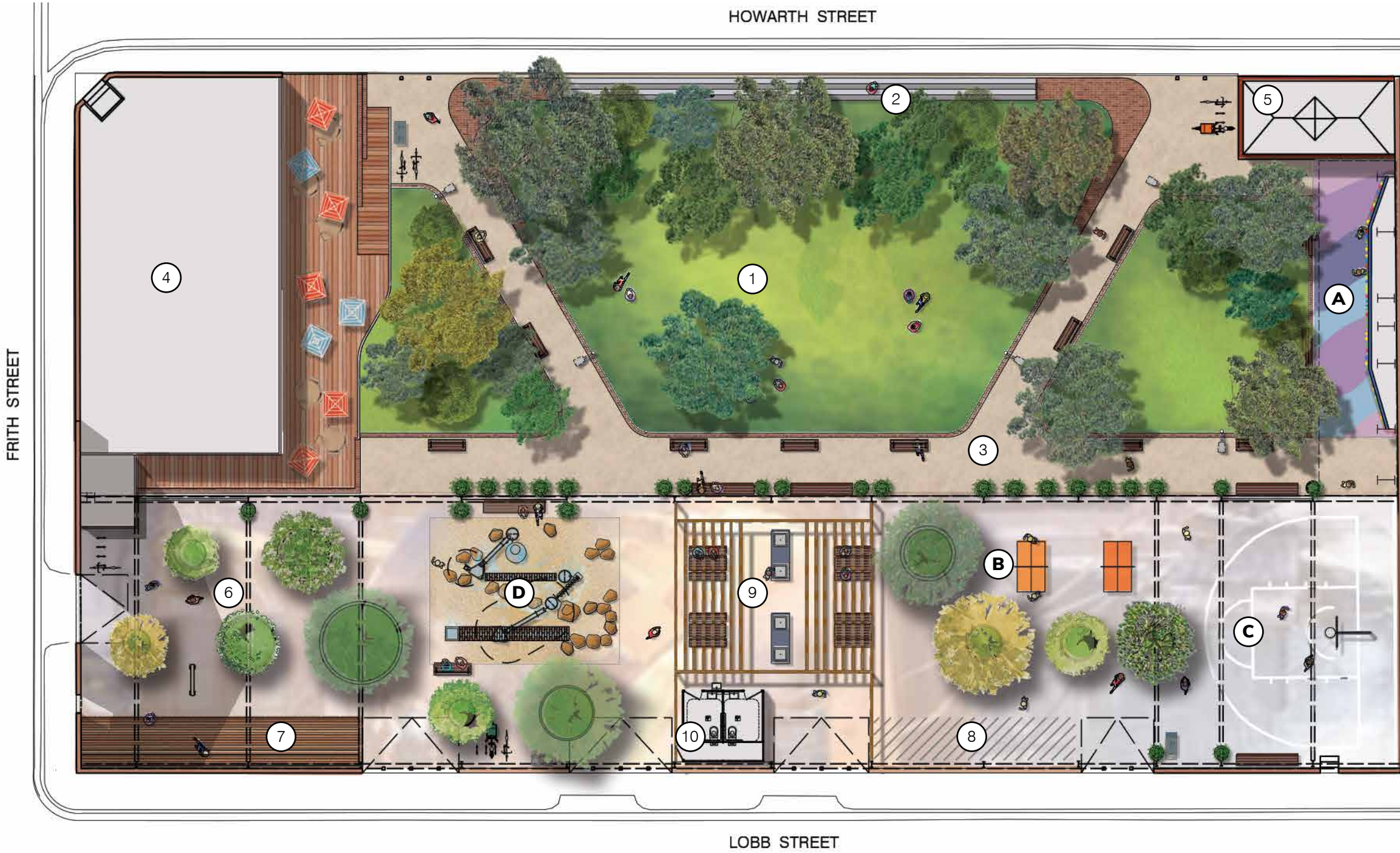


Park Close to Home - Frith Street Brunswick is supported by the Victorian Government through the DELWP Local Parks Program

CRAIG PERRY 2023

Draft Concept Plan

Park Close to Home - Frith Street Brunswick



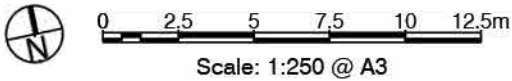
- ① Lawn
- ② North-facing sun steps
- ③ Gravel paths and bench seating
- ④ Heritage facade & building
- ⑤ Electrical sub-station
- ⑥ Historical interpretation & signage
- ⑦ Morning sun deck
- ⑧ Food truck parking space
- ⑨ BBQs, picnic tables and shelter
- ⑩ Public toilet

In these areas, alternative uses have been nominated for community consultation and feedback:

- A**
 - A.1 Bouldering wall with rubber mats
 - A.2 Small enclosed dog off-leash area
 - A.3 Community garden
 - A.4 More green space
- B**
 - B.1 Ping pong tables
 - B.2 Fitness equipment
- C**
 - C.1 Basketball half-court
 - C.2 Mini Futsal half-court
- D**
 - D.1 Water play
 - D.2 Nature play
 - D.3 Playful climbing structures
 - D.4 Contemporary play equipment

A historic local park

The northern side of the park features green grass and trees with generous seating and pathways. The southern side enhances the site’s industrial heritage within the former steel foundry floor, walls, and roof frame.



Park Close to Home - Frith Street Brunswick is supported by the Victorian Government through the DELWP Local Parks Program

Ideas for the new park

Park Close to Home - Frith Street Brunswick



Trees on the former steel foundry site will be grown in large steel containers that reference the foundry crucibles used for pouring metals into casts.



The play area for younger children references the steel foundry process of pouring and casting, combined with natural materials such as stone and sand

Design references

The unique qualities of the former industrial site can be celebrated with the use of steel pots for growing trees or plants, with sculptural play elements that reference the steel foundry process and art murals that connect to the past.



Recycled brick from the demolished walls to be re-used in edging and steps.



Brunswick's industrial heritage is to be acknowledged in painted murals and a concrete floor supergraphic. The reference images: The Foundry, Pouring the Crucible painting by Diego Rivera indicate the industrial theme that could be applied, and the Marvel Stadium floor and wall mural show the impact that scale can have on a large space.

Ideas for the new park

Park Close to Home - Frith Street Brunswick



BBQ areas, picnic tables and shelter



Picnics and gatherings on the grass



Lawn for pop-cinema or events



Morning sun deck

More green space

A key aim of the park is to provide recreational green space in a built-up urban area.

Public amenities such as BBQs, picnic tables, shade shelters, and drinking fountains facilitate flexible use, and public toilets enable longer stays.

Other important factors need to be considered in the overall design, open and welcoming entries, equitable access for all, path lighting at night, bicycle parking, waste removal and shade.

The design has been developed to balance the needs of future park users with the significance of retained parts of the heritage buildings.

Ideas for the new park

Park Close to Home - Frith Street Brunswick



Play equipment and climbing structures



Nature-based play



Fitness equipment

Engaging alternatives

Council invites the community to help decide what goes in this new park.

Some options are shown here.



Mini Futsal half-court



Basketball half-court



Small enclosed off-leash dog area



Bouldering wall



Community garden



More green space



Ping pong tables

Park Close to Home - Frith Street Brunswick

Artist's impression, viewed from north west



Moreland
City Council



Park Close to Home - Frith Street Brunswick is supported by the Victorian Government through the DELWP Local Parks Program

CRAIG PERRY 2020