

FAWKNER MERRI CREEK PARKLANDS PLAN

DRAFT

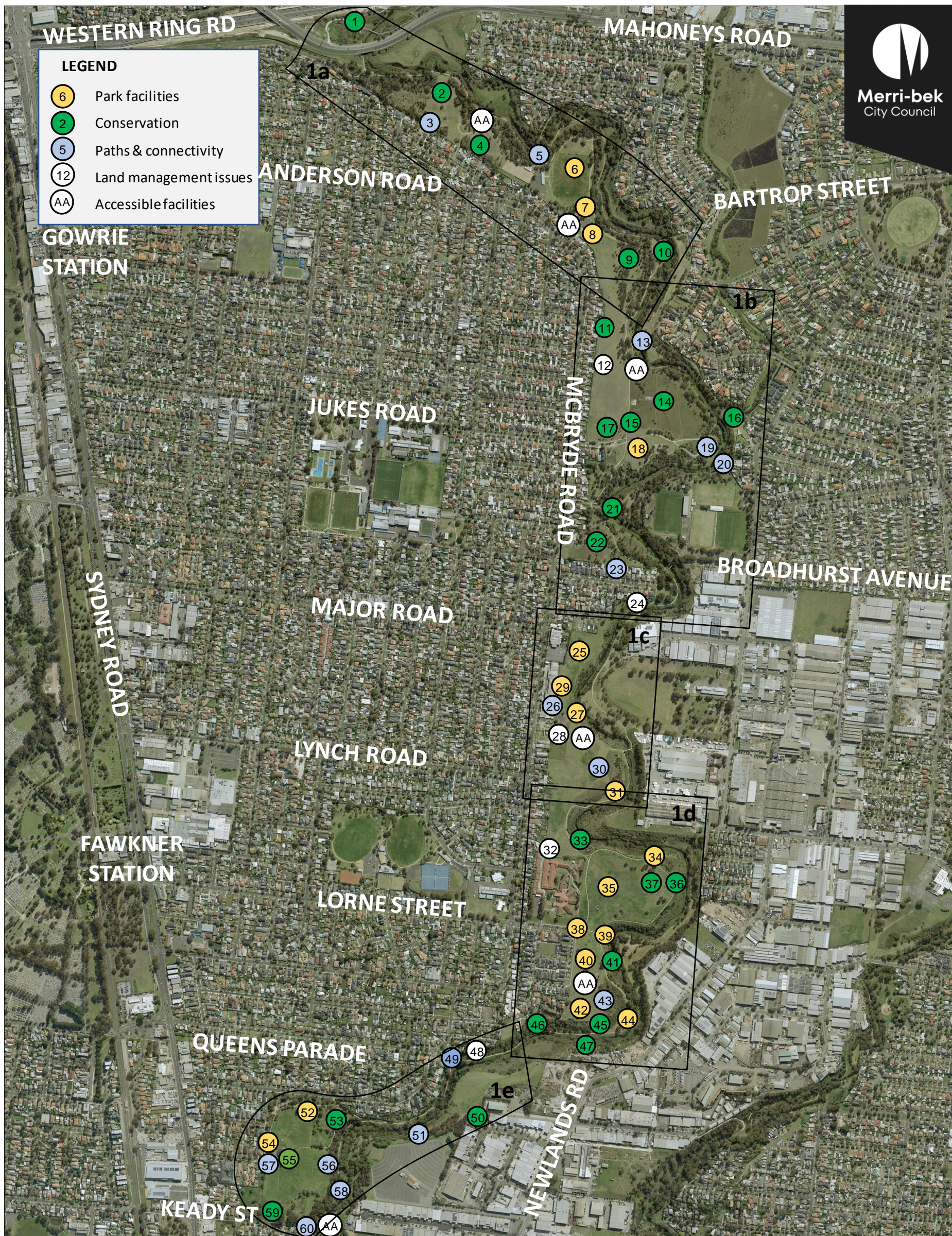


Merri-bek
City Council

1. Parklands Improvements Summary
2. Moomba
3. Bababi Djinanang
4. McBryde - Hare
5. Lorne St
6. Parker Reserve
7. Engagement with Traditional Owners
8. Land management issues
9. Integrated water management opportunities
10. Path Improvements
11. Accessibility Nodes
12. Open Space Planning
13. Wayfinding and signage
14. Dog management
15. Conservation Management Plans
16. Open space acquisition



1. FAWKNER MERRI CREEK PARKLANDS OPPORTUNITIES



Copyright (c) Moreland City Council. VicMap base data (eg. cadastral, property, topographic, planning, etc) sourced from the State of Victoria. The State of Victoria and Moreland City Council do not warrant the accuracy or completeness of information shown on this publication. Any person using or relying upon such information, does so on the basis that the State of Victoria and Moreland City Council shall bear no responsibility or liability whatsoever for any errors, faults, defects or omissions in the information. Melway map image(s), if detected - is Copyright (c) Melway Publishing Pty Ltd (<http://www.melway.com.au>).

Date Map Generated: 21/7/2021

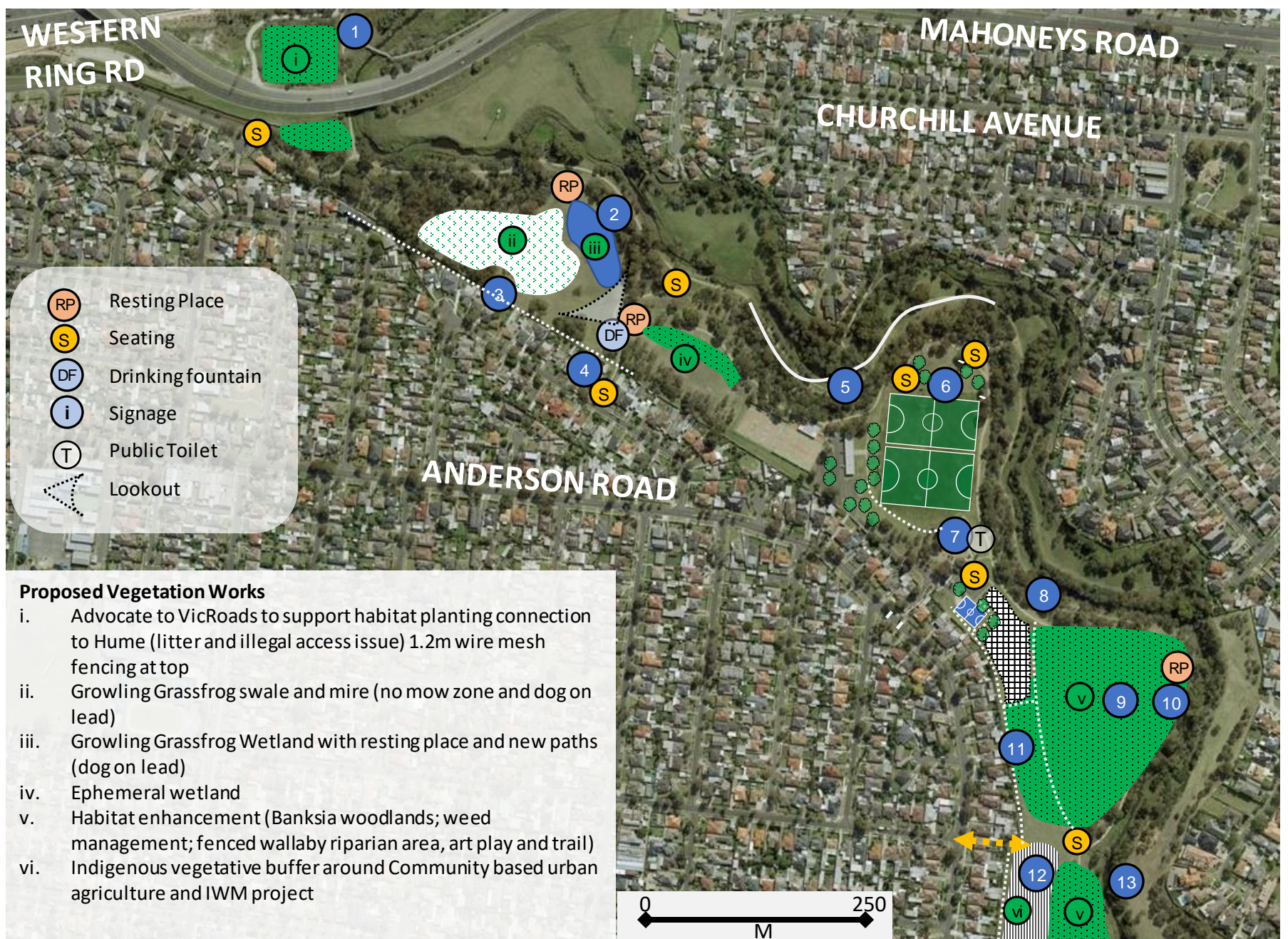
Map Scale: 10,000.00



1. FAWKNER MERRI CREEK PARKLANDS PLAN OPPORTUNITIES LIST

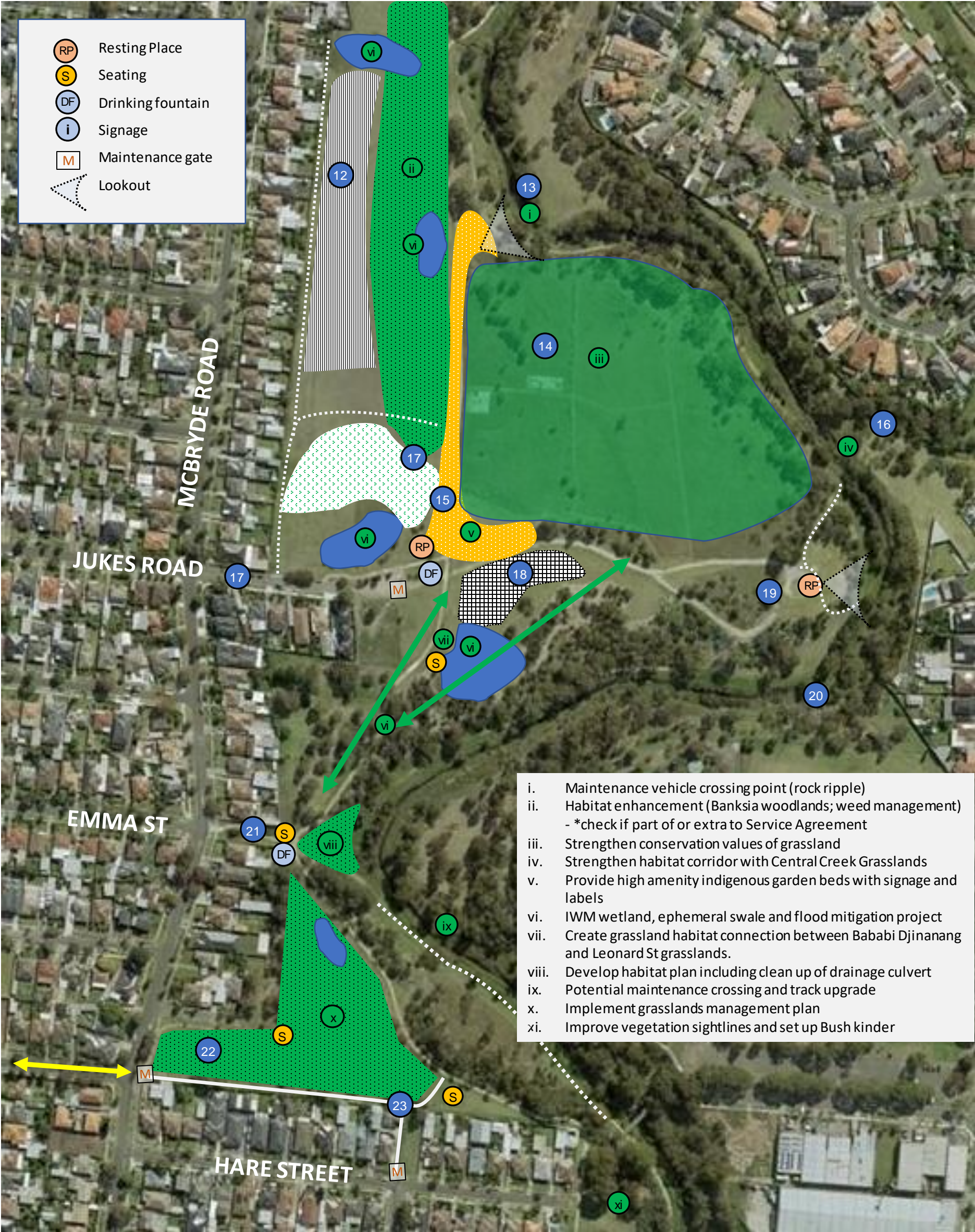
1. Advocate to State Government and Hume and Whittlesea Councils for strengthened Merri Creek Trail and habitat connections
2. Growling Grassfrog Wetland with resting place, interpretation, new accessible paths and Waterwatch
3. Maintenance and fire access track
4. Improve Somerlayton entry and create ephemeral wetland with Banksias and understorey planting
5. Accessible concrete path connections to creek bridge
6. Demolish and relocate cricket nets, create spectator and habitat mound; consider line marking 2 x junior fields; update perimeter fencing with openings; create warm up space at southern end
7. Convert south side social pavilion to community meeting space and accessible public toilet; create food truck powered site in car park
8. Investigate new recreation opportunities: fenced dog park, futsal goals, cricket nets, circuit path, exercise stations
9. Develop habitat enhancement plan with interpretation, habitat hollows; open grasslands; Banksia woodlands; habitat fencing & weed management
10. Art and nature play loop, bush kinder and riparian vegetation protection
11. Construct fire break maintenance track and remove invasive weeds from rear of property (agave and prickly pear)
12. Investigate community market garden and food forest social enterprise
13. Investigate improved maintenance connection to Reservoir with rock ripple or pedestrian bridge
14. Strengthen conservation values of grasslands
15. Provide high amenity indigenous garden beds with signage and labels
16. Improved habitat connection to Central Creek grasslands
17. Undertake feasibility of Jukes Rd IWM wetland and flood mitigation project
18. Investigate Fenced Dog Park, Jukes Rd
19. Nature circuit resting place and bush kinder
20. Investigate new creek crossing (rock ripple and maintenance Jukes Rd – Radford Rd) for loop walk to Hare St bridge
21. Construct stormwater culvert, develop Emma St habitat plan and revegetate culvert
22. Implement Leonard Street grasslands conservation management plan
23. New shared path, fire break and maintenance path access with Leonard St powerpole removal
24. Resolve connectivity issues and public land encroachment; remove invasive and woody weeds; work with residents to establish food forest
25. Develop nature-based Hood Crescent – McBryde Parkland Plan with community including nature play and path to mound lookout. Refer to Eddie Botha's 2018 plan.
26. New McBryde path connection and maintenance access
27. Resting place with circuit path and distance markers
28. Undertake renaming of acquired VicRoads land and investigate contaminated soil risks and potential land remediation as well as Committee of management for Crown land with suitable land use determined by the community
29. Potential enclosed Dog Park, McBryde St
30. Accessible and alternative flood path
31. Resting place
32. Create dementia sensory planting with path and pedestrian/maintenance link to McBryde St
33. Major woody weed works site A
34. Resting Place and circuit story telling
35. Cricket wicket
36. Major woody weed works site B
37. Habitat and swale restoration
38. Lorne St toilets and exercise station
39. Resting Place
40. Nature Play, picnic facilities, seating, bush kinder and car parking (3 hour 9am-6pm)
41. Major woody weed works site C
42. Proposed enclosed Dog Park, Lorne St
43. Lorne St circuit path and distance markers
44. Major woody weed works site D
45. Develop Imaroo Quarry Vegetation Management Plan
46. Major woody weed works site E
47. Resolve land ownership issues
48. Provide clear wayfinding and accessible path
49. Restore Dairy Drive wetland and create resting place for local workers
50. Investigate informal path link between Dairy Drive and Bakers Road and feasibility of creek crossing.
51. Basketball and futsal halfcourt
52. Upgrade car park with swale drainage, resurfacing, drinking fountain, bins and shelter. Staged renewal of park fencing with tree planting.
53. Public toilet upgrade and DDA accessible path improvements.
54. Increase habitat plantings, shade trees and nature play
55. Parker Reserve circuit path with distance markers
56. Improved Mathieson St to car park path
57. Upgrade escarpment staircase to the creek
58. Investigate IWM wetland feasibility from Keady St
59. Investigate Keady St to creek path connection
60. Naming of 2 Spry St parkland and adjoining parklands with assistance from Wurundjeri Woi Wurrung

2 FAWKNER MERRI CREEK PARKLANDS - MOOMBA PARK PROPOSED WORKS



1. Advocate to State Government and Hume and Whittlesea Councils for strengthened Merri Creek Trail and habitat connections
2. Growling Grassfrog Wetland with resting place, interpretation, new accessible paths & Waterwatch
3. Maintenance and fire access track
4. Improve Somerlayton entry and create ephemeral wetland with Banksias and understorey planting
5. Accessible concrete path connections to creek bridge
6. Demolish and relocate cricket nets, create spectator and habitat mound; consider line marking 2 x junior fields; update perimeter fencing with openings; create warm up space at southern end
7. Convert south side social pavilion to community meeting space and accessible public toilet; create food truck powered site in car park
8. Investigate new recreation opportunities: fenced dog park, futsal goals, cricket nets, circuit path, exercise stations
9. Develop habitat enhancement plan with interpretation, habitat hollows; open grasslands; Banksia woodlands; habitat fencing & weed management
10. Art and nature play loop, bush kinder and riparian vegetation protection
11. Construct fire break maintenance track and remove invasive weeds from rear of property (agave and prickly pear)
12. Investigate community market garden and food forest social enterprise
13. Investigate improved maintenance connection to Reservoir with rock ripple or pedestrian bridge

2 FAWKNER MERRI CREEK PARKLANDS - BABABI DJINANANG PROPOSED WORKS



0 250
M

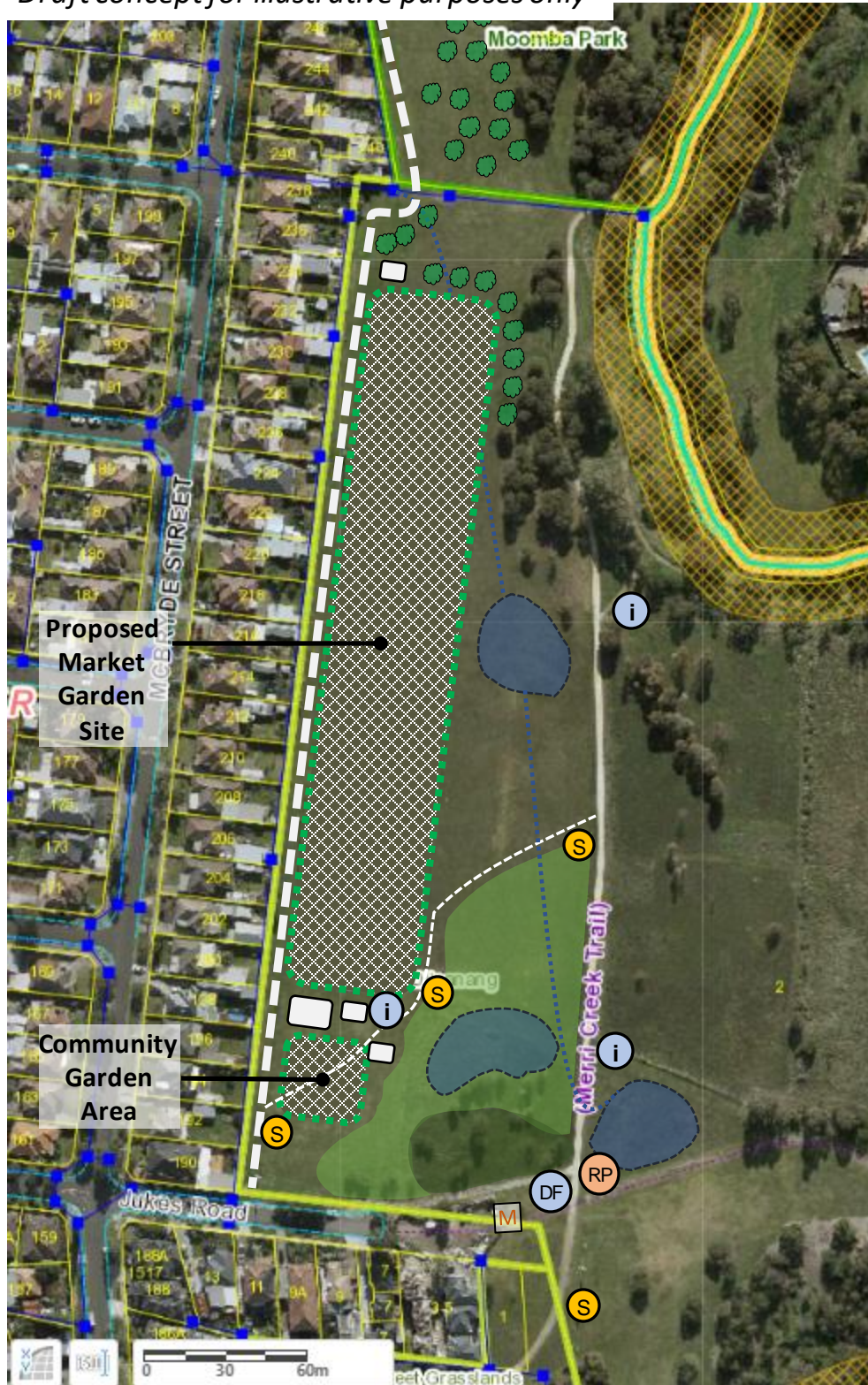
2.a FAWKNER MERRI CREEK PARKLANDS - BABABI DJINANANG

Item 12. Draft Community Market Garden Proposal

Proposed Fawkner Food Hub and Working Farm

Draft scope, principles and objectives need to be developed and trialled to give clarity to prospective partners, funders and the Fawkner community as well as key stakeholders such as the Friends of Merri Creek and Merri Creek Management Committee.

Draft concept for illustrative purposes only



Diverse objectives

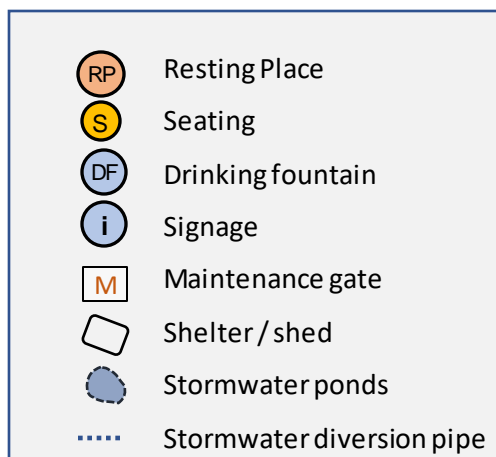
- Food systems: address food production and demand
- Social enterprise
 - Key partners: Growing Farmers, Merri Health, Yooralla, CERES, Kevin Heinze Grow, Fawkner Food Bowl, SEEDS
- Disability support service (NDIS) orientated
- Employment and training pathways
- Community connection to food production/systems, improve food literacy in the community
- Aligned with local food production and climate emergency risks
- Integrated water management provision for stormwater harvesting, storage and reuse rather than potable water

Policy Alignment

- [Food Systems Strategy Extension 2020-24](#)
 - Sustainable (closed loop regenerative) local food production is a priority program area – includes an action to support the development of larger food growing sites to enable greater access to locally grown fresh food and provide education and employment opportunities
- Water Map 2040 (Integrated Water Management Strategy)
- Open Space Strategy
- Health and Well Being Plan
- Zero Carbon Merri-bek Action Plan

Issues / Risks:

- Governance
- Financial
- Environmental
- Community engagement



2 FAWKNER MERRI CREEK PARKLANDS - BABABI DJINANANG PROPOSED WORKS

12. Investigate community market garden and food forest social enterprise
13. Investigate improved maintenance connection to Reservoir with rock ripple or pedestrian bridge
14. Strengthen conservation values of grasslands
15. Provide high amenity indigenous garden beds with signage and labels
16. Improved habitat connection to Central Creek grasslands
17. Undertake feasibility of Jukes Rd IWM wetland and flood mitigation project
18. Investigate Fenced Dog Park, Jukes Rd
19. Nature circuit resting place and bush kinder
20. Investigate new creek crossing (rock ripple and maintenance Jukes Rd – Radford Rd) for loop walk to Hare St bridge
21. Construct stormwater culvert, develop Emma St habitat plan and reveg culvert
22. Implement Leonard Street grasslands conservation management plan
23. New shared path, fire break and maintenance path access with Leonard St powerpole removal

3 FAWKNER MERRI CREEK PARKLANDS - MCBRYDE PROPOSED WORKS

23. New shared path, fire break and maintenance path access with Leonard St powerpole removal
24. Resolve connectivity issues and public land encroachment; remove invasive and woody weeds; work with residents to establish food forest
25. Develop nature-based Hood Crescent – McBryde Parkland Plan with community including nature play and path to mound lookout. Refer to Eddie Botha's 2018 plan.
26. New McBryde path connection and maintenance access
27. Resting place with circuit path and distance markers
28. Undertake renaming of acquired VicRoads land and investigate contaminated soil risks and potential land remediation as well as Committee of management for Crown land with suitable land use determined by the community
29. Potential enclosed Dog Park, McBryde St
30. Accessible and alternative flood path
31. Resting place

3 FAWKNER MERRI CREEK PARKLANDS - MCBRYDE PROPOSED WORKS



4 FAWKNER MERRI CREEK PARKLANDS - LORNE STREET PROPOSED WORKS



4 FAWKNER MERRI CREEK PARKLANDS - LORNE STREET PROPOSED WORKS

31. Resting place
32. Create dementia sensory planting with path and pedestrian/maintenance link to McBryde St
33. Major woody weed works site A
34. Resting Place and circuit story telling
35. Cricket wicket
36. Major woody weed works site B
37. Habitat and swale restoration
38. Lorne St toilets and exercise station
39. Resting Place
40. Nature Play, picnic facilities, seating, bush kinder and car parking (3 hour 9am-6pm)
41. Major woody weed works site C
42. Proposed enclosed Dog Park, Lorne St
43. Lorne St circuit path and distance markers
44. Major woody weed works site D

5 FAWKNER MERRI CREEK PARKLANDS - PARKER RESERVE COBURG NORTH PROPOSED WORKS

45. Develop Imaroo Quarry Vegetation Management Plan
46. Major woody weed works site E
47. Resolve land ownership issues
48. Provide clear wayfinding and accessible path
49. Restore Dairy Drive wetland and create resting place for local workers
50. Investigate informal path link between Dairy Drive and Bakers Road and feasibility of creek crossing.
51. Basketball and futsal halfcourt
52. Upgrade car park with swale drainage, resurfacing, drinking fountain, bins and shelter. Staged renewal of park fencing with tree planting.
53. Public toilet upgrade and DDA accessible path improvements.
54. Increase habitat plantings, shade trees and nature play
55. Parker Reserve circuit path with distance markers
56. Improved Mathieson St to car park path
57. Upgrade escarpment staircase to the creek
58. Investigate IWM wetland feasibility from Keady St
59. Investigate Keady St to creek path connection
60. Naming of 2 Spry St parkland and adjoining parklands with assistance from Wurundjeri Woi Wurrung

5 FAWKNER MERRI CREEK PARKLANDS - PARKER RESERVE PROPOSED WORKS

Vegetation Management Works

- i. Continue implementation of Imaroo Quarry vegetation management plan
- ii. Resolve ownership and remove woody weeds and reveg
- iii. Queens Parade Habitat Corridor
- iv. Reveg as a high priority
- v. Construct vegetative swale and culvert
- vi. Major MW partnership riparian vegetation works



Vegetation Works

- i. Woodland with grassland
- ii. Open Banksia woodlands with grassland
- iii. IWM wsud raingarden
- iv. Open Banksia woodlands with grassland
- v. Work with residents to create a Mathieson Street Habitat Corridor
- vi. Keady Street Habitat Corridor
- vii. Parker Reserve vegetation escarpment works

- RP Resting Place
- S Seating
- DF Drinking fountain
- i Signage
- P Playground
- G Exercise stations
- T New Public Toilet
- M Maintenance gate/bollards
- Lookout

7. Engage Wurundjeri Woi Wurrung Traditional Owners

Priority recommendations arising from the Cultural Assessment and Walk on Country

- Celebration and educational opportunities
- Commitment to engage Wurundjeri Woi Wurrung Cultural Heritage Aboriginal Corporation
- Naming of land
- Immersive Cultural Heritage trail
- Opportunities for Narrap team land management

Elder Dave Wandin, On-Country Cultural Values Recording



Image: Delta Lucille Freedman, Narrap Unit, for the Wurundjeri Woi Wurrung Cultural Heritage Aboriginal Corporation, November 2021

Merri Creek Management Committee crew undertaking vegetation management, Bababi Djinanang Grasslands





Image: MCMC

8 FAWKNER MERRI CREEK PARKLANDS RENAMING




LEGEND

-  Confirm naming and expanded area request
-  New naming requests lodged with Wurundjeri Woi Wurrung Cultural Heritage Aboriginal Corporation

Proposed Wurundjeri Naming Sites

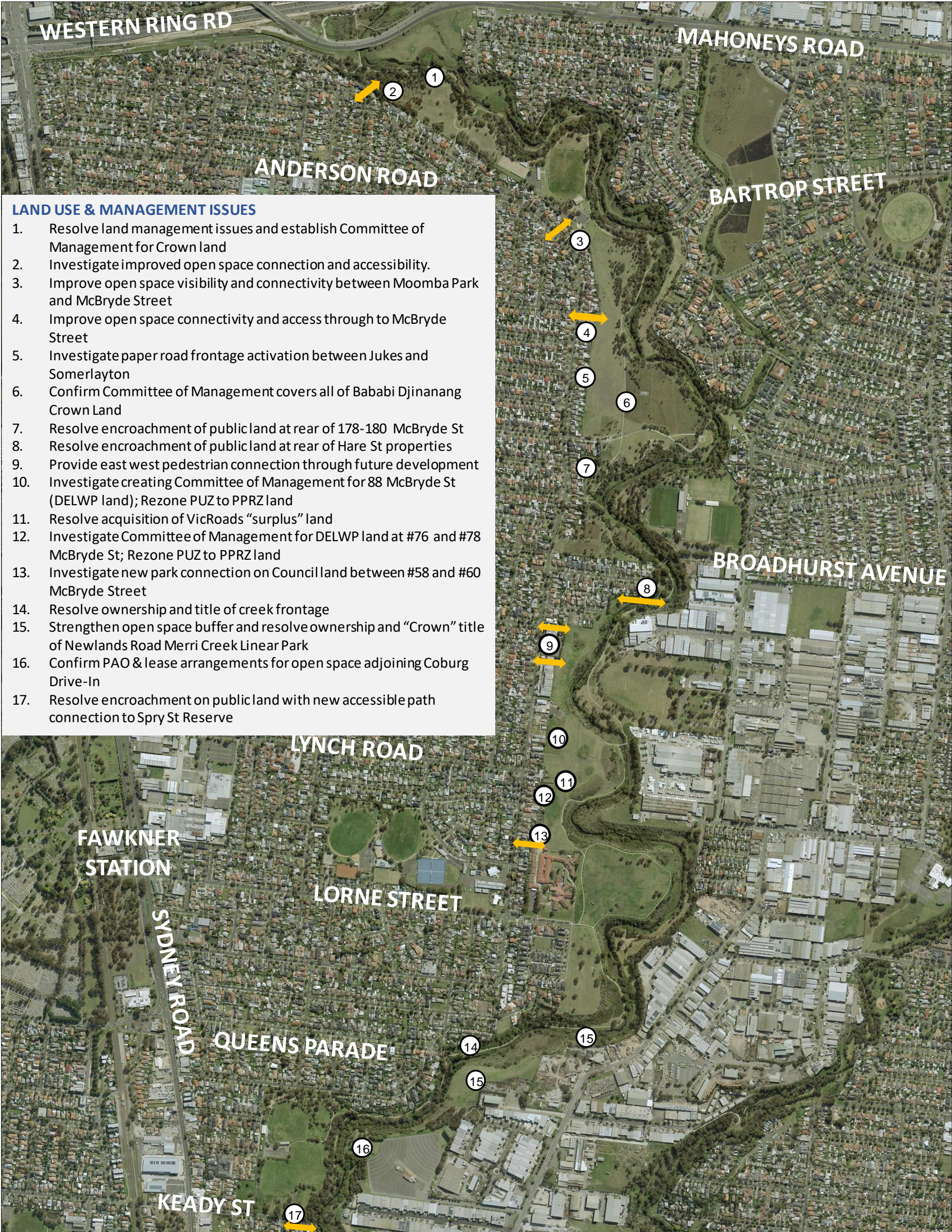
-  Bababi Djinanang, Fawkner (Expansion of area)
-  Yaruk'ho Wilam (Magic Place), Coburg North

New name requests to be consulted with community through Fawkner Merri Creek Parklands Plan

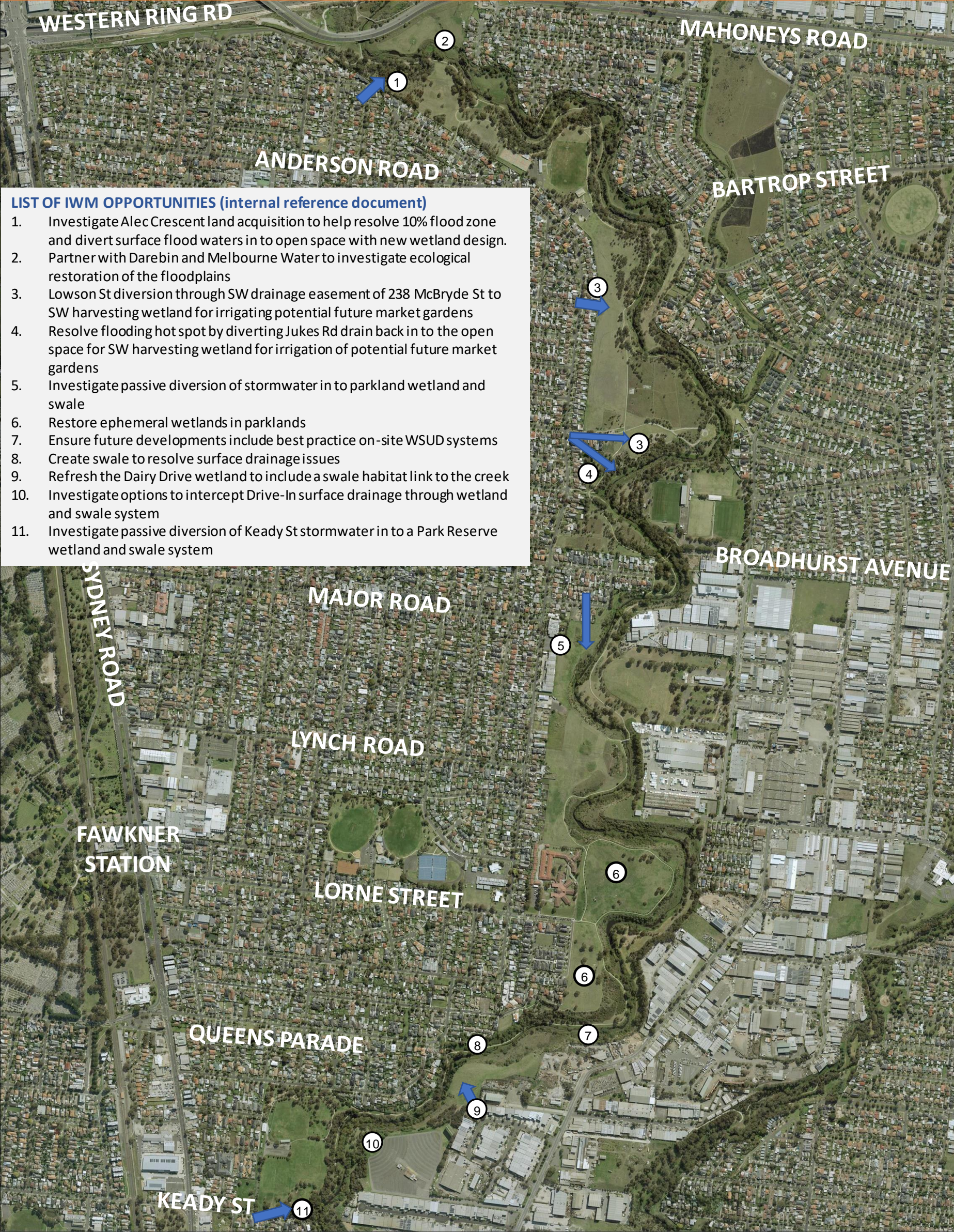
-  104B McBryde Street Fawkner
-  1-9, 2-10 Lorne Street, Fawkner
-  2 Spry Street, Coburg North



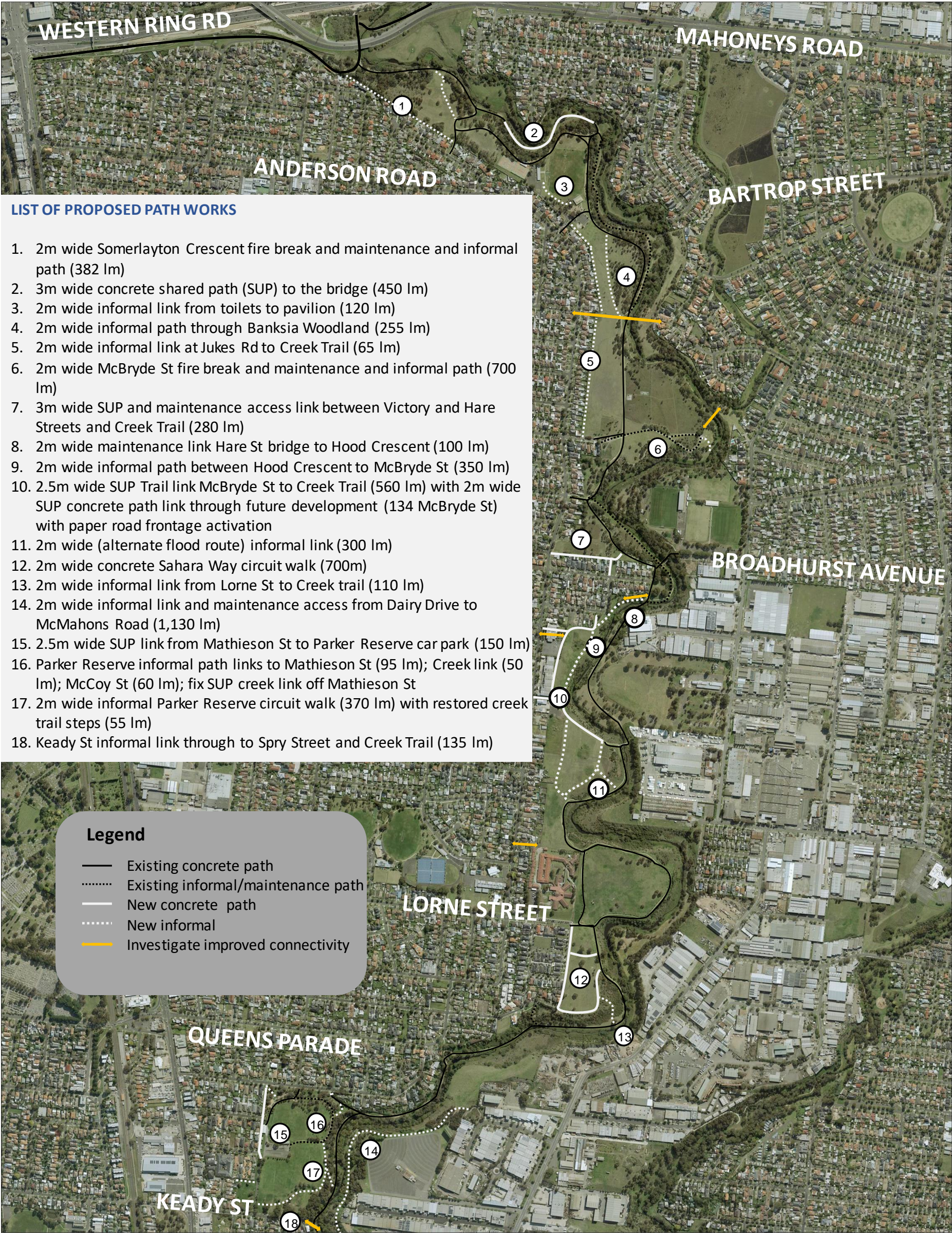
9. FAWKNER MERRI CREEK PARKLANDS LAND MANAGEMENT ISSUES



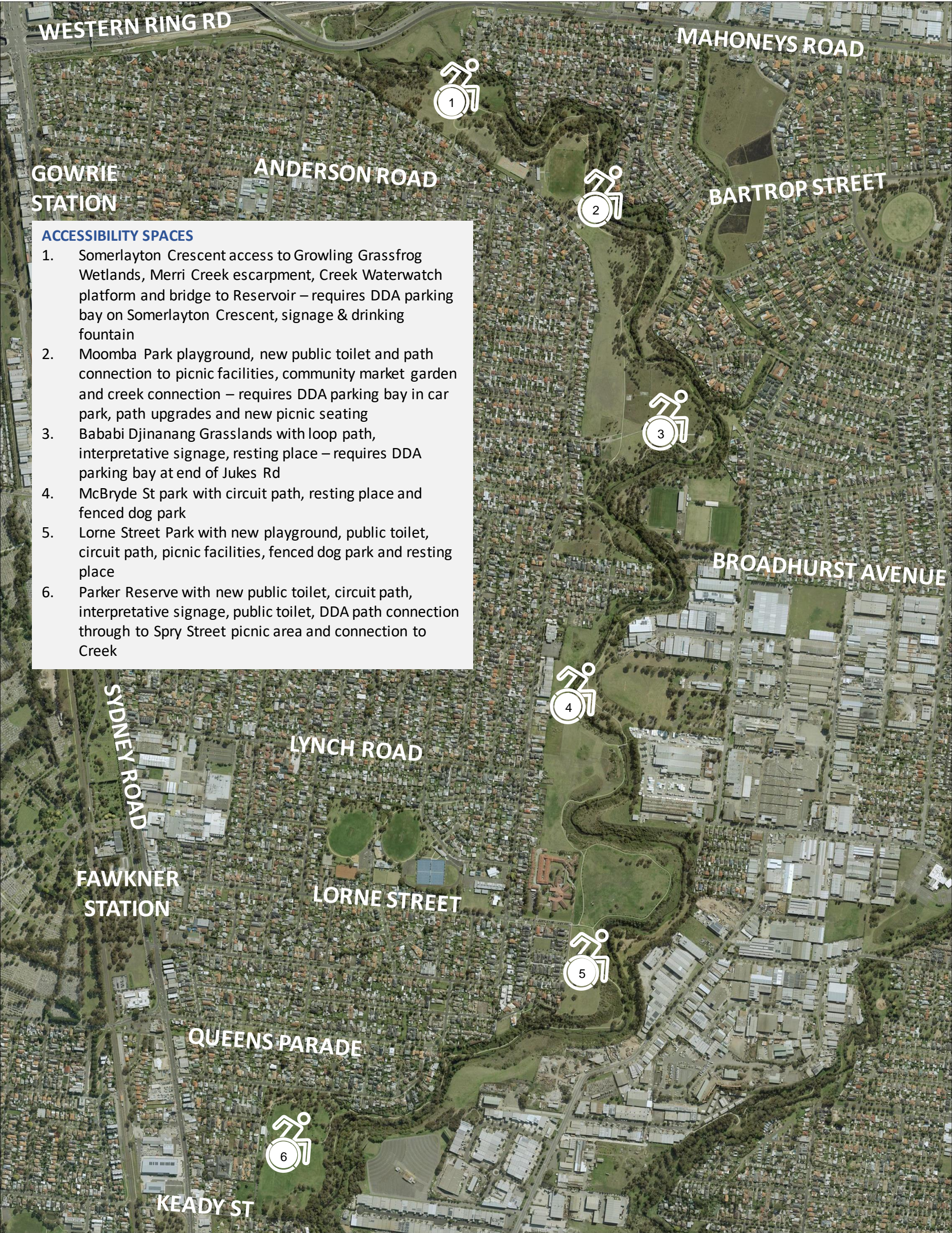
10. FAWKNER MERRI CREEK PARKLANDS INTEGRATED WATER MANAGEMENT (IWM) OPPORTUNITIES



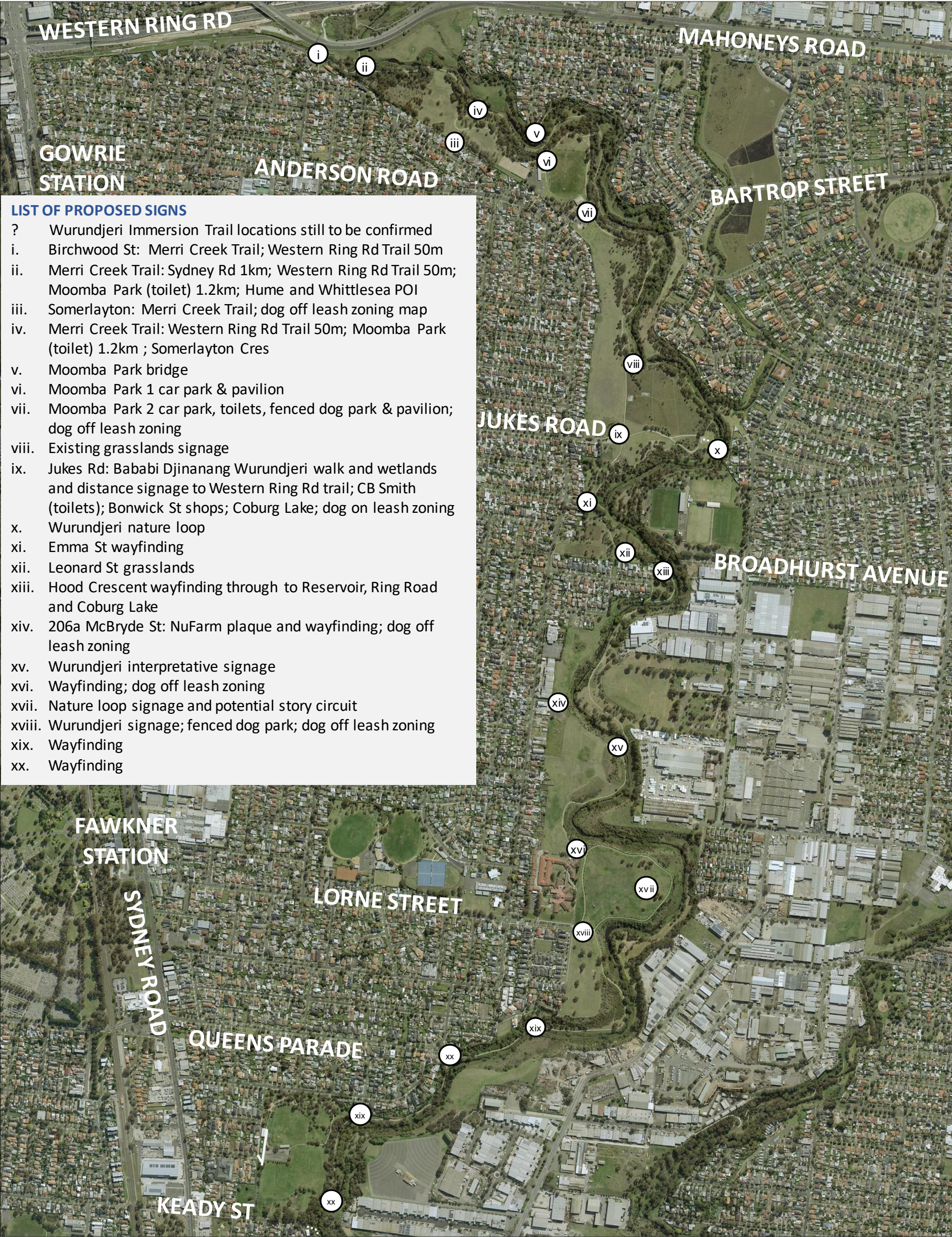
11. FAWKNER MERRI CREEK PARKLANDS PROPOSED PATH WORKS



12. FAWKNER MERRI CREEK PARKLANDS ACCESSIBILITY NODES



13. FAWKNER MERRI CREEK PARKLANDS PROPOSED SIGNAGE



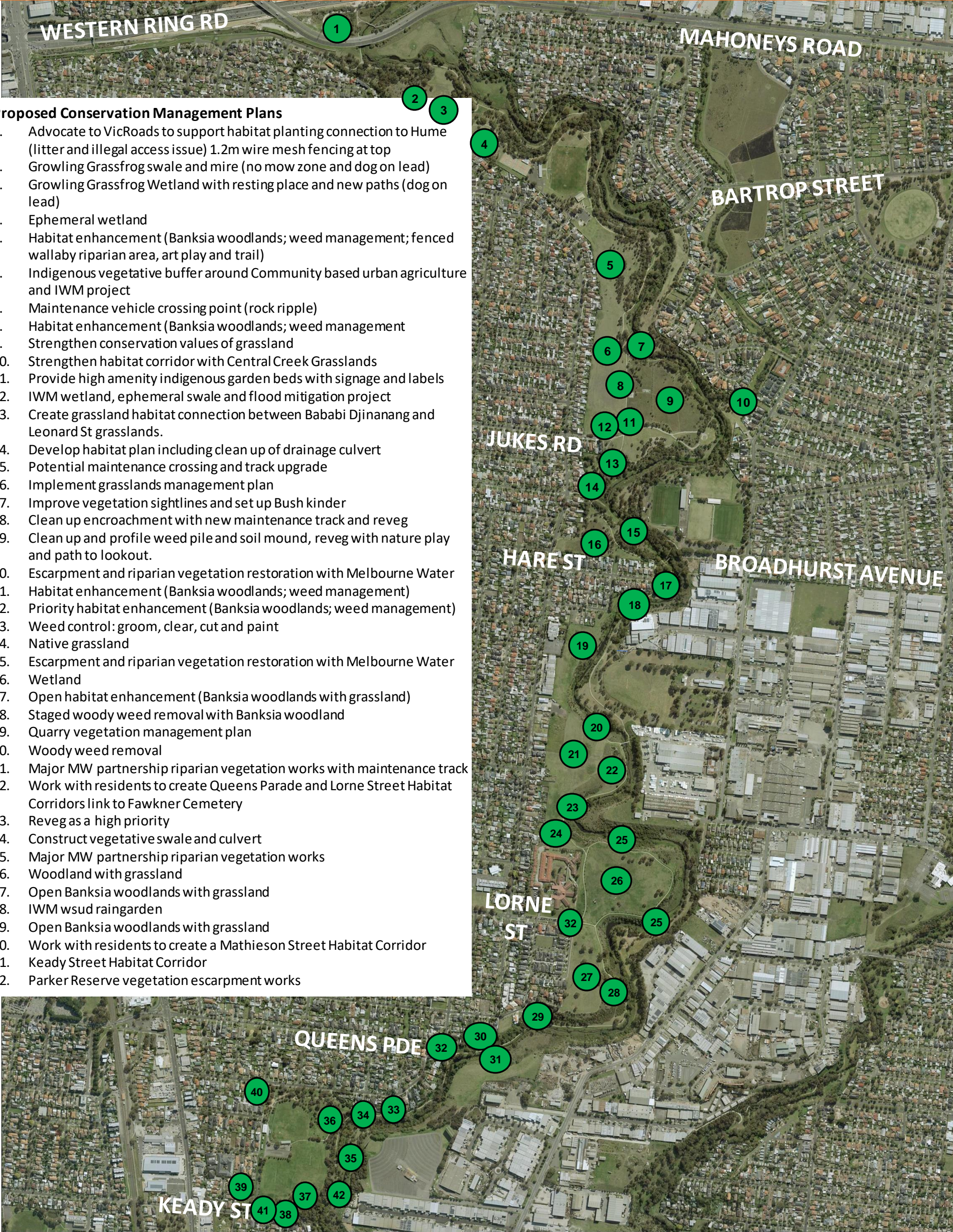
LIST OF PROPOSED SIGNS

- ? Wurundjeri Immersion Trail locations still to be confirmed
- i. Birchwood St: Merri Creek Trail; Western Ring Rd Trail 50m
- ii. Merri Creek Trail: Sydney Rd 1km; Western Ring Rd Trail 50m; Moomba Park (toilet) 1.2km; Hume and Whittlesea POI
- iii. Somerlayton: Merri Creek Trail; dog off leash zoning map
- iv. Merri Creek Trail: Western Ring Rd Trail 50m; Moomba Park (toilet) 1.2km ; Somerlayton Cres
- v. Moomba Park bridge
- vi. Moomba Park 1 car park & pavilion
- vii. Moomba Park 2 car park, toilets, fenced dog park & pavilion; dog off leash zoning
- viii. Existing grasslands signage
- ix. Jukes Rd: Bababi Djinanang Wurundjeri walk and wetlands and distance signage to Western Ring Rd trail; CB Smith (toilets); Bonwick St shops; Coburg Lake; dog on leash zoning
- x. Wurundjeri nature loop
- xi. Emma St wayfinding
- xii. Leonard St grasslands
- xiii. Hood Crescent wayfinding through to Reservoir, Ring Road and Coburg Lake
- xiv. 206a McBryde St: NuFarm plaque and wayfinding; dog off leash zoning
- xv. Wurundjeri interpretative signage
- xvi. Wayfinding; dog off leash zoning
- xvii. Nature loop signage and potential story circuit
- xviii. Wurundjeri signage; fenced dog park; dog off leash zoning
- xix. Wayfinding
- xx. Wayfinding

14. FAWKNER MERRI CREEK PARKLANDS DOG OFF LEASH ZONING



15. CONSERVATION MANAGEMENT WORK PLANS



Proposed Conservation Management Plans

1. Advocate to VicRoads to support habitat planting connection to Hume (litter and illegal access issue) 1.2m wire mesh fencing at top
2. Growling Grassfrog swale and mire (no mow zone and dog on lead)
3. Growling Grassfrog Wetland with resting place and new paths (dog on lead)
4. Ephemeral wetland
5. Habitat enhancement (Banksia woodlands; weed management; fenced wallaby riparian area, art play and trail)
6. Indigenous vegetative buffer around Community based urban agriculture and IWM project
7. Maintenance vehicle crossing point (rock ripple)
8. Habitat enhancement (Banksia woodlands; weed management)
9. Strengthen conservation values of grassland
10. Strengthen habitat corridor with Central Creek Grasslands
11. Provide high amenity indigenous garden beds with signage and labels
12. IWM wetland, ephemeral swale and flood mitigation project
13. Create grassland habitat connection between Bababi Djinanang and Leonard St grasslands.
14. Develop habitat plan including clean up of drainage culvert
15. Potential maintenance crossing and track upgrade
16. Implement grasslands management plan
17. Improve vegetation sightlines and set up Bush kinder
18. Clean up encroachment with new maintenance track and reveg
19. Clean up and profile weed pile and soil mound, reveg with nature play and path to lookout.
20. Escarpment and riparian vegetation restoration with Melbourne Water
21. Habitat enhancement (Banksia woodlands; weed management)
22. Priority habitat enhancement (Banksia woodlands; weed management)
23. Weed control: groom, clear, cut and paint
24. Native grassland
25. Escarpment and riparian vegetation restoration with Melbourne Water
26. Wetland
27. Open habitat enhancement (Banksia woodlands with grassland)
28. Staged woody weed removal with Banksia woodland
29. Quarry vegetation management plan
30. Woody weed removal
31. Major MW partnership riparian vegetation works with maintenance track
32. Work with residents to create Queens Parade and Lorne Street Habitat Corridors link to Fawknor Cemetery
33. Reveg as a high priority
34. Construct vegetative swale and culvert
35. Major MW partnership riparian vegetation works
36. Woodland with grassland
37. Open Banksia woodlands with grassland
38. IWM wsud raingarden
39. Open Banksia woodlands with grassland
40. Work with residents to create a Mathieson Street Habitat Corridor
41. Keady Street Habitat Corridor
42. Parker Reserve vegetation escarpment works



16. RECENT COUNCIL ACQUIRED LAND TO PROTECT OPEN SPACE THE MERRI CREEK

