

ستتغير حاويات النفايات خاصتك في شهر تموز / يوليو  
سيتم توصيل حاويات النفايات الجديدة إلى منزلك بين آذار/ مارس وتموز/ يونيو.  
للمزيد من المعلومات:  
conversations.merri-bek.vic.gov.au/waste/Arabic  
هاتف: 92801913

Οι κάδοι απορριμμάτων σας αλλάζουν τον Ιούλιο.  
Οι νέοι κάδοι απορριμμάτων θα παραδοθούν στο σπίτι σας μεταξύ Μαρτίου και Ιουνίου.  
Για περισσότερες πληροφορίες:  
conversations.merri-bek.vic.gov.au/waste/Greek  
Τηλέφωνο: 9280 1912

A luglio cambieranno i bidoni dei rifiuti.  
I nuovi bidoni per i rifiuti saranno consegnati a casa tua tra marzo e giugno.  
Per maggiori informazioni:  
conversations.merri-bek.vic.gov.au/waste/Italian  
Telefono: 9280 1911

जुलाईमा तपाईंको फोहोर डबिबा (बनि) हरू परिवर्तन हुँदैछ।  
तपाईंका नयाँ बनिहरू तपाईंको घरमा मार्च देखि जून भित्र  
वितरण गरिन्छ।  
थप जानकारीको लागि सम्पर्क गर्नुहोस्:  
conversations.merri-bek.vic.gov.au/waste/Nepali  
फोन: 9280 0751

Çöp kutularınız Temmuz ayında değişiyor.  
Yeni çöp kutularınız Mart ve Haziran tarihleri arasında  
evinize teslim edilecektir.  
Daha fazla bilgi için:  
conversations.merri-bek.vic.gov.au/waste/Turkish  
Telefon: 9280 1914

آپ کے کوڑے دان جولائی میں تبدیل ہو رہے ہیں۔  
آپ کے نئے کوڑے دان مارچ اور جون کے درمیان آپ کے گھر پہنچا  
دیے جائیں گے۔  
مزید معلومات کے لیے:  
conversations.merri-bek.vic.gov.au/waste/Urdu  
فون: 92801913

## Why are we getting 4 bins?

Waste and recycling systems are changing across Victoria. This means more can be made from the resources in our kerbside bins.

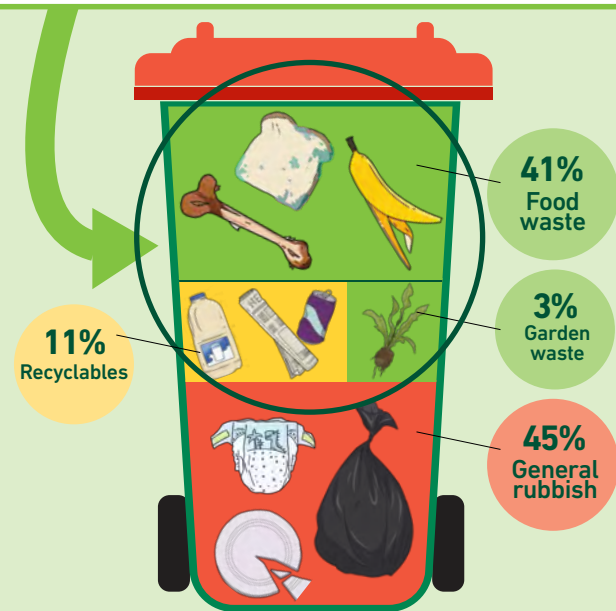
Our 4-bin service will help reduce waste sent to landfill and improve the quality of recyclables in Victoria.

## We can halve our waste sent to landfill

Food thrown into your general rubbish bin ends up in landfill, which creates greenhouse gases that contribute to climate change.

By sorting our waste and recycling into 4 bins we can halve the amount of waste sent to landfill in Merri-bek, creating a clean and green Merri-bek.

**Over half of what is put in the average household general rubbish bin could be composted or recycled.**



**Keep me!**  
Put this quick guide on your fridge or somewhere handy.

## Your small acts make a big impact

It might seem like a small thing to sort your waste properly, but it makes a big impact when we all do it correctly.

Reducing waste and recycling well helps keep valuable resources out of landfill. This means items can either be reused or turned into things like new glass jars, mulch and compost.

Learn more at [sustainability.vic.gov.au](https://sustainability.vic.gov.au)



## More information

If you have any questions about the upcoming changes, please read the frequently asked questions sent with this flyer or visit [merri-bek.vic.gov.au/bins](https://merri-bek.vic.gov.au/bins)

In June we will send you an information pack with a user guide, fridge magnet and collection calendar to help you prepare for the 4-bin service.

### Contact us

Email: [wasteprojects@merri-bek.vic.gov.au](mailto:wasteprojects@merri-bek.vic.gov.au)  
Call: 9240 1111



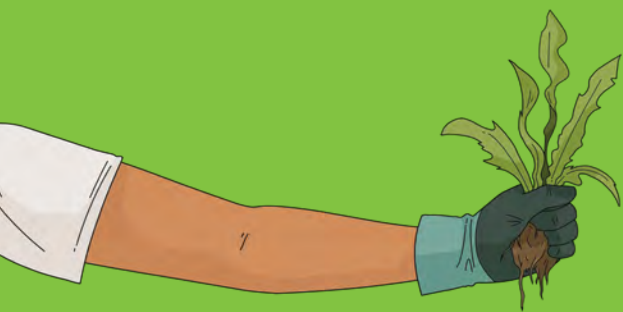
# Our new 4-bin service is coming in July 2023

**Get ready - your bins are coming soon!**



**This guide is for people living in units, townhouses and apartments in Merri-bek.**





We understand that not all households have space to store 4 bins. That's why we are providing a slightly different service to people living in units, townhouses and apartments across Merri-bek.

We trialled the 4-bin service with over 1,000 households to help shape how we deliver the service to households like yours.

**Most people living in units, townhouses and apartments will use shared bins.**

- Shared bins are clearly signed and stored in a common area where all residents can use them.
- A lower waste charge applies where shared bins are used.

**There will be no changes to your general rubbish bins.**

- You will continue to use the general rubbish bins you currently have, whether they are shared or you have your own.

**Some households will need to use a glass recycling drop-off point.**

- Residents in certain developments or streets may need to take their glass bottles and jars to a glass recycling drop-off point.
- We will let you know if this applies to you.

# The 4-bin service for units, townhouses and apartments varies based on the number of households in your development:

## 4-9 households

This applies to most townhouse developments or small unit blocks.

### Mixed recycling



- You will have your **own** 240 litre mixed recycling bin that will be **collected fortnightly**.
- Additional bins will arrive in March-April so that every household has their own mixed recycling bin.
- This bin is to be stored on your own property. This will create space for shared glass recycling and food and garden organics bins in communal storage areas.

### Glass recycling



- You will use a **shared** glass recycling bin that will be **collected monthly**.
- This bin will arrive in April-May.
- 1 x 120 litre glass recycling bin will be delivered to your development.
- More shared glass recycling bins can be requested through your Owners Corporation from August.

### Food and garden organics



- You will use **shared** food and garden organics bins that will be **collected weekly**.
- If you **do not** already have a shared food and garden organics bin, you will receive one in June.
- 1 x 240 litre food and garden organics bin will be delivered to your development.
- If you already have your own light green-lidded bin for food and garden waste, you may continue to use this.

## 10-19 households

This applies to larger townhouse developments and medium-sized unit or apartment blocks.

### Mixed recycling



- You will use **shared** 240 litre mixed recycling bins that will be **collected fortnightly**.
- Additional shared bins will arrive in March-April.
- If you already have your own yellow-lidded bin for mixed recycling, you will get a larger 240 litre bin for your household to use.

### Glass recycling



- You will use **shared** glass recycling bins that will be **collected monthly**.
- These bins will arrive in April-May.
- 2 x 120 litre glass recycling bins will be delivered to your development.
- More shared glass recycling bins can be requested through your Owners Corporation from August.

### Food and garden organics



- You will use **shared** food and garden organics bins that will be **collected weekly**.
- If you **do not** already have a shared food and garden organics bin, you will receive one in June.
- 1 x 120 litre food and garden organics bin will be delivered for every 4 dwellings in your development (up to a maximum of 4 bins).
- If you already have your own light green-lidded bin for food and garden waste, you may continue to use this.

## 20 or more households

This applies to large apartment buildings or precinct developments using shared bins.

### Mixed recycling



- **There will be no changes to your mixed recycling service.**
- You will use **shared** mixed recycling bins that will continue to be **collected weekly**.
- A weekly mixed recycling service will be provided as these types of developments don't have enough space to store extra recycling bins.
- Glass will no longer go in this bin from 1 July.

### Glass recycling



- You will use **shared** glass recycling bins that will be **collected monthly**.
- These bins will arrive in April-May.
- 2 x 120 litre glass recycling bins will be delivered to your development.
- More shared glass recycling bins can be requested through your Owners Corporation from August.

### Food and garden organics



- You will use **shared** food and garden organics bins that will be **collected weekly**.
- If you **do not** already have shared food and garden organics bins, you will receive some in June.
- 4 x 120 litre food and garden organics bins will be delivered to your development.
- If you already have your own light green-lidded bin for food and garden waste, you may continue to use this.