

What goes in each bin

until 30 June 2023

Our waste service will be changing to a 4-bin service in July 2023.
Until then please continue to use your bins as you currently do.

Here's a reminder of what goes in your bins now:

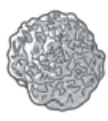
MIXED RECYCLING BIN

Collected weekly

✓ Yes



Steel tins



Aluminium cans, foil



Paper, newspaper, magazines



Cardboard, egg cartons

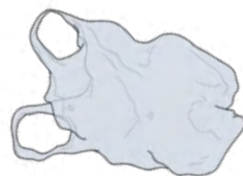


Glass bottles and jars



Plastic bottles and containers

✗ No



Plastic bags or soft plastics

- Put your recycling in the bin loose, not in bags.
- Items must be empty.
- Flatten cardboard boxes to save space.

FOOD AND GARDEN ORGANICS BIN

Collected fortnightly

✓ Yes



Fruit and vegetable scraps



Meat, bones, seafood



Bread, meal leftovers



Cheese, egg shells



Plants, grass, weeds



Leaves, twigs

✗ No



Compostable or plastic bags

- Food scraps and garden clippings only.
- Put in your bin loose or use paper towel to wrap food waste.
- All packaging must be removed, including fruit stickers.
- Compostable bags are not accepted.

GENERAL RUBBISH BIN

Collected Weekly

✓ Yes



Nappies, wet wipes



Broken glassware, crockery



Kitty litter, animal droppings



Old clothing, shoes or textiles



Bagged rubbish

✗ No



E-waste or hazardous materials

- Use this bin only for items that can't be reused or recycled.
- Use our A to Z guide to find out how to dispose of other household waste: merri-bek.vic.gov.au/azguide

Merri-bek Language Link

Italiano	Italian	9280 1911
Ελληνικά	Greek	9280 1912
عربي	Arabic	9280 1913

Türkçe	Turkish	9280 1914
Tiếng Việt	Vietnamese	9280 1915
पञ्जाबी	Nepali	9280 0751

普通话 Chinese (Simplified) 9280 0750

National Relay Service:
13 36 77 or relayservice.com.au

What goes in each bin

from 1 July 2023



Merri-bek
City Council

A new 4-bin waste service is coming to Merri-bek in July 2023.

There will be changes to the number of bins you have, the size of your bins and how often they are picked up.

New bins will be delivered to your home in stages between March and June 2023.

From 1 July 2023, you will need to sort your waste into 4 different bins:

MIXED RECYCLING BIN

Collected fortnightly – you will get a larger 240 litre bin

✓ Yes



Steel tins



Aluminium cans, foil



Paper, newspaper, magazines



Cardboard, egg cartons



Plastic bottles and containers

✗ No



Plastic bags or soft plastics

- Put your recycling in the bin loose, not in bags.
- Items must be empty.
- Flatten cardboard boxes to save space.

GLASS RECYCLING BIN

Collected monthly - you will get a new 120 litre bin

✓ Yes



Glass bottles



Glass jars

✗ No



Drinking glasses



Loose lids and bottle caps

- Put your glass recycling in the bin loose, not in bags.
- Glass bottles and jars must be empty.
- Jar lids and bottle caps must be firmly attached.

FOOD AND GARDEN ORGANICS BIN

Collected weekly - you will get a new bin if you don't already have one

✓ Yes



Fruit and vegetable scraps



Meat, bones, seafood



Bread, meal leftovers



Cheese, egg shells



Plants, grass, weeds



Leaves, twigs

✗ No



Compostable or plastic bags

- Food scraps and garden clippings only.
- Put in your bin loose or use paper towels to wrap food waste.
- All packaging must be removed, including fruit stickers.
- Compostable bags are not accepted.

GENERAL RUBBISH BIN

There will be no changes to your general rubbish bin. It will continue to be collected weekly

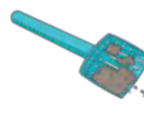
✓ Yes



Nappies, wet wipes



Broken glassware, crockery



Kitty litter, animal droppings



Old clothing, shoes or textiles



Bagged rubbish

✗ No



E-waste or hazardous materials

- Use this bin only for items that can't be reused or recycled.
- Use our A to Z guide to find out how to dispose of other household waste: merri-bek.vic.gov.au/azguide

More information: merri-bek.vic.gov.au/bins or call 9240 1111



Sustainability
Victoria

