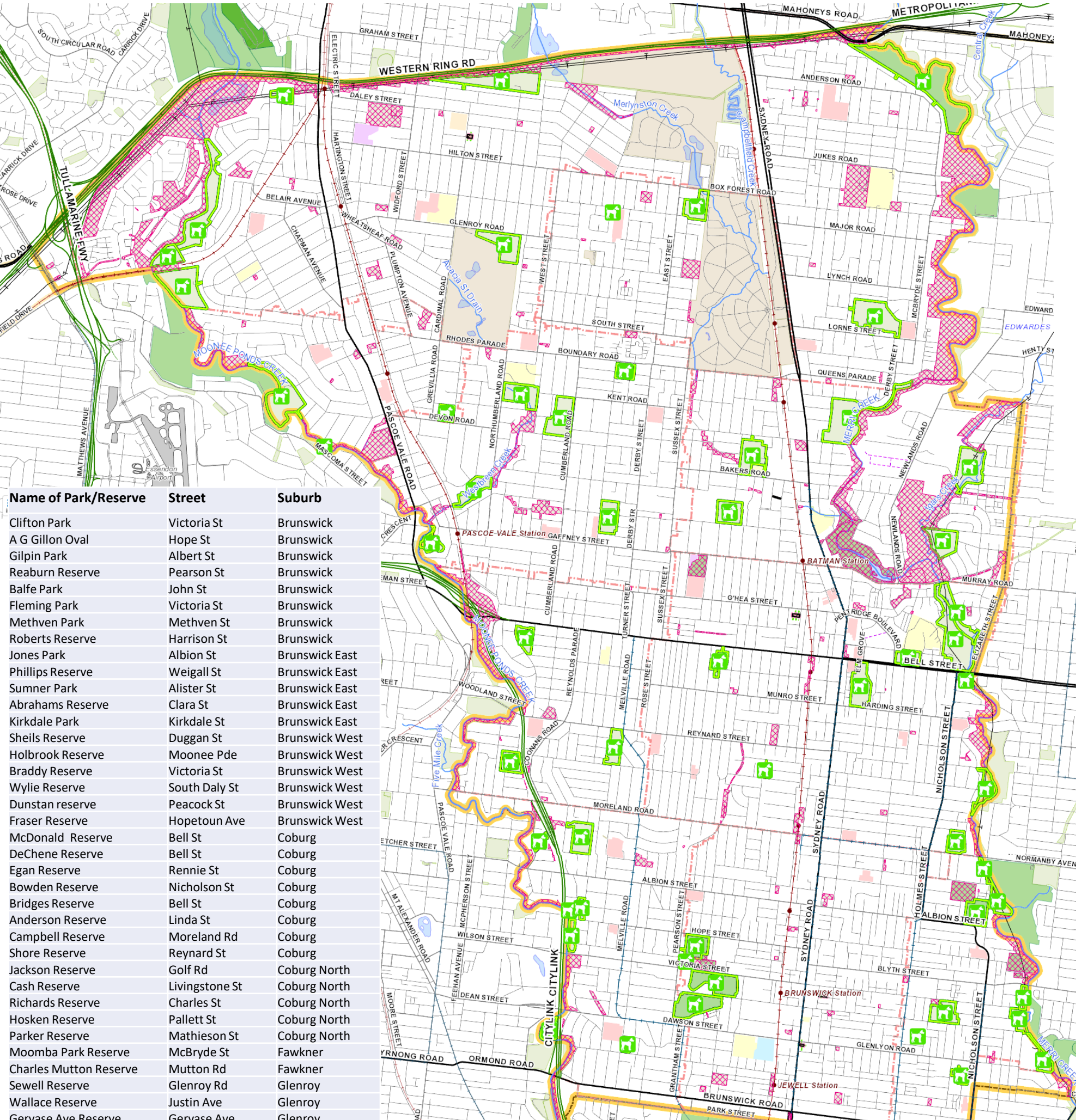


Moreland City Council designated dog off leash parks



Name of Park/Reserve	Street	Suburb
Clifton Park	Victoria St	Brunswick
A G Gillon Oval	Hope St	Brunswick
Gilpin Park	Albert St	Brunswick
Reaburn Reserve	Pearson St	Brunswick
Balfe Park	John St	Brunswick
Fleming Park	Victoria St	Brunswick
Methven Park	Methven St	Brunswick
Roberts Reserve	Harrison St	Brunswick
Jones Park	Albion St	Brunswick East
Phillips Reserve	Weigall St	Brunswick East
Sumner Park	Alister St	Brunswick East
Abrahams Reserve	Clara St	Brunswick East
Kirkdale Park	Kirkdale St	Brunswick East
Sheils Reserve	Duggan St	Brunswick West
Holbrook Reserve	Moonee Pde	Brunswick West
Braddy Reserve	Victoria St	Brunswick West
Wylie Reserve	South Daly St	Brunswick West
Dunstan reserve	Peacock St	Brunswick West
Fraser Reserve	Hopetoun Ave	Brunswick West
McDonald Reserve	Bell St	Coburg
DeChene Reserve	Bell St	Coburg
Egan Reserve	Rennie St	Coburg
Bowden Reserve	Nicholson St	Coburg
Bridges Reserve	Bell St	Coburg
Anderson Reserve	Linda St	Coburg
Campbell Reserve	Moreland Rd	Coburg
Shore Reserve	Reynard St	Coburg
Jackson Reserve	Golf Rd	Coburg North
Cash Reserve	Livingstone St	Coburg North
Richards Reserve	Charles St	Coburg North
Hosken Reserve	Pallett St	Coburg North
Parker Reserve	Mathieson St	Coburg North
Moomba Park Reserve	McBryde St	Fawkner
Charles Mutton Reserve	Mutton Rd	Fawkner
Sewell Reserve	Glenroy Rd	Glenroy
Wallace Reserve	Justin Ave	Glenroy
Gervase Ave Reserve	Gervase Ave	Glenroy
Jacana Valley	Fran St	Glenroy
Kingsford Smith Ulm Reserve	Pengana Ave	Glenroy
Martin Reserve	Epping St	Hadfield
Mommson Reserve	North Street	Hadfield
J P Fawkner	Francis St	Oak Park
Joyce Reserve	Northumberland Rd	Pascoe Vale
Raeburn Reserve	Raeburn St	Pascoe Vale
Austin Crescent Reserve	Austin Cres	Pascoe Vale
Cole Reserve	Kent Rd	Pascoe Vale
Hallam Reserve	Landells Rd	Pascoe Vale
Rayner Reserve	Devon Rd	Pascoe Vale
Esselemont Reserve	Somerset St	Pascoe Vale South
Brearily Reserve	Heliopolis St	Pascoe Vale South
Morris Reserve	Wadham St	Pascoe Vale South

1. The owner of any dog **must keep the dog in effective control** by means of a chain, cord or leash held by the owner and attached to the dog while the dog is in any public place, other than designated off-leash areas.
 2. A dog may be exercised off a chain, cord or leash in designated off-leash areas, subject to the following conditions:
 - The owner must carry a chain, cord or leash sufficient to bring the dog under effective control if the dog behaves in a manner which threatens any person or animal;
 - The owner must remain in effective voice or hand control of the dog so as to be able to promptly bring the dog under effective control by placing the dog on a chain, cord or leash if that becomes necessary; and
 - The owner must not allow the dog to worry, attack, rush at or threaten any person or animal.
 3. If a dog is not restrained by means of a chain, cord or leash in a designated off-leash area, the owner must bring the dog under effective control by means of a chain, cord or leash at all times when the dog is within **15 metres** of:
 - any playground or children’s play equipment;
 - the principal location of an organised sporting or community event or festival;
 - the principal location of an organised public meeting; or
 - a permanent barbecue or picnic area when in use.
- Or **1 metre** of a shared pathway (and at all times while on the shared pathway).