

What the community panel have to say about

Neighbourhoods

and the question

What should Council prioritise when making decisions for investing in neighbourhoods to support the current and future needs of our community?



The community panel voted on opportunities and made suggestions on how Council can prioritise making decisions for investing in neighbourhoods in Moreland.

Put people first!

The overall message from the community panel is that the needs of (and the benefits to) the community should be put ahead of other things, like budgets or technical and political concerns and requirements.

Neighbourhoods

The top factors that the community panel think are important for building and upgrading neighbourhood facilities are, if the project:



- will benefit the community, including if it will improve both physical and mental health.
- has the support of the community.
- pays attention to the needs of the community now, as well as in the future.



- is environmentally friendly.



- is accessible to the most vulnerable people in the community (this includes thinking about accessibility needs, transport options, location, costs, language etc.).

Share more information with us

The community panel think that what we have in our neighbourhoods is good, but would like to see:



- more information about the facilities and services that are available to the community.



- better signage on buildings and facilities so they are easier to find and easier to understand what service they provide.
- safer paths and streets.



- opening hours at certain facilities that can also support people who work during regular business hours.

- more information about how decisions are made to build or upgrade things.



- information about how the community can give feedback, ask questions or participate in conversations or decision-making processes

The community panel would also like Council to prioritise projects that are achievable. They would like to see a more flexible and thoughtful approach to the prioritising of short-term and long-term projects, with thought given to how community needs and desires might change over time.

What the community panel have to say about

Heath and Equity

and the question

What can Council do to improve social and economic inequality in Moreland in the next few years?



The community panel had suggestions for Council to find ways to improve social and economic inequality in Moreland by:

- Improve how information is shared with people in the community that are hard to reach.
- Connect people with job opportunities.



Health and Equity



- Help people in the community connect to each other more, including older adults and people who live alone.



- Fight for and do whatever possible to support affordable housing.
- Look for options to support people and organisations that help people in financial stress, like partnerships or using empty or underused Council buildings.

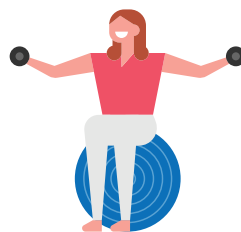


- Investigate who needs help so that support is targeted and efficient.

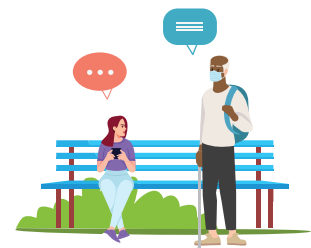
- Offer Council kitchens and spaces to community groups to expand their community care activities.



- Educate the general community about Aboriginal and Torres Strait Islander history, and local stories, challenges and needs.
- Educate the wider community about the challenges experienced by marginalised people and groups in Moreland experience. And share how Council and community members can help, or are helping.



- Encourage people to be more physically active.



- Make everyone feel respected, included, supported and valued.
- Increase education about domestic violence.
- Encourage tolerance.

More education.

More connections.

More action.

What the community panel have to say about

Economy and the Arts

and the question

What is the best way for Council to provide support for both local businesses and creative industries (including ways to recover from the pandemic)?



The community panel voted on opportunities and made suggestions on ways to support the economy and the arts in Moreland.

Supporting the economy in Moreland

Ranked opportunities

1. Love Moreland, Buy Local campaign
2. Better promotion of local businesses and initiatives



Economy and the Arts

3. Moreland and Coburg Station pillars painted or used for exhibitions, concerts or other arts.



4. Initiatives to attract commercial and industry investment.
5. Plus One program to support and promote micro-businesses.



6. Council-led financial voucher incentives.
7. Progress the work of the Brunswick Design Precinct.

Reasons for supporting these ideas

- Microbusinesses make up 70% of Moreland businesses.
- Creating and supporting jobs is important.
- Promoting and spending more at local businesses would be good.
- We should focus on what we already have in Moreland.

Extra ideas

- These opportunities should also focus on the environment.

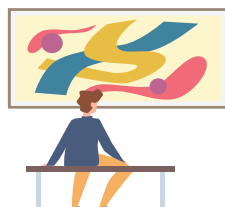


- More businesses, events and interesting public art will attract more people to visit Moreland.

Supporting the arts in Moreland

Ranked opportunities

1. Prioritise local artists for new developments and public spaces.



2. Increase public art and street murals by local artists.
3. Integrate arts with other initiatives (such as health, and safety).
4. Increase arts infrastructure in the north of Moreland.

5. Develop a significant festival in Glenroy.
6. Increased grants for artists
7. Use empty shops for creative and artistic activities or businesses.
8. An arts parade or festival to promote Moreland Artists of the Year.
9. Create a silo art trail.

Reasons for supporting these ideas

- The northern suburbs of Moreland currently have less opportunities and attention.



- Grants are vital to creating opportunities for artists.
- Public art and activities can increase safety and feeling safe, as well as promote more walking and bike riding.

Extra ideas

- Use shopfronts that are empty.
- It's important that local art projects are led by the community.
- All types of art should be included, not just visual art.
- Grants should be fairly distributed across Moreland.

What the community panel have to say about

Governance and Democracy

and the question

What actions would increase the community's trust in Council?

and the question

In what different and innovative ways could the community and Council work together to deliver projects?



The community panel had 3 main recommendations for council to increase trust and partner with community to deliver projects in Moreland.

1. Find us.

- Talk to and share information with people where they are.
- Use regular notices (such as rates and animal registration notices) to share extra information about how Council works, what Council is doing, and how the community can get involved.



Governance and Democracy



- Use services and facilities that the community already engage with and like (such as libraries and arts events) to share extra information about how Council works and how to get involved.



- Communicate clearly with us, and find better ways to express messages.



- Find ways for community members to be involved in Council business and making decisions.

2. Listen to us.

- Councillors should listen more to what the community need and fight for us, and not just the loud people, but those who are quieter and may be more vulnerable.



- Use many different ways to listen to the community, such as pop-up events, and offer different ways to give feedback or vote on ideas.



- A program like Moreland Connector could use people with strong connections to community groups to help share information.

3. Be honest.

- More transparency about Council activities.



- We want more information about what Council does, how it does it, how decisions are made, and what the outcomes of projects are.
- The community want to know who councillors are, what they represent, what they do, what they have achieved, and why they want to be councillors.



- Tell us about plans, results, evaluations, wins and losses, and feedback opportunities.

What the community panel have to say about

Getting around

and the question

How can Council support more people to use sustainable transport options (walking, bikes and public transport) while also making sure there is enough access for disabled people and people with limited mobility?



The community panel made recommendations on ways to support people in Moreland to use sustainable transport options.

Get the community involved

- Communicate with residents before, during and after any plans to make changes to roads and paths.
- Involve locals in designing new paths or other infrastructure.

Getting around

- Give the community a sense of ownership by being involved in decisions.
- Share information including best practice, and possible and actual outcomes.
- Communicate with residents after trials to share whether it has been successful.
- People are afraid of change, so help the community understand and to be part of any changes.

Think about all the options



- Improve the connection between paths, locations and bike parking.



- If it is possible to light more paths, some people would feel more comfortable walking or riding at night.



- Promote any grant or funding opportunities for homeowners to install off-street parking.
- Make sure that the location is the best fit for the travel options, including thinking about resident attitudes.



- Use footpaths and other off-road options where possible.

Celebrate with the community

- Have community celebrations to launch trials or new paths or infrastructure.



- Give incentives, discounts or prizes to people using or trying sustainable travel options.



- Offer cheap or free parking permits to people or households with low incomes or disabilities.
- Offer alternatives to any perceived loss (of parking spots etc.), such as rate reductions or other incentives for using cars less.
- Sell any change as a benefit, not a loss.



- Turn it into a community game to see how many kilometres people can walk or ride in their neighbourhood, or how many days they can go without using their car etc.

What the community panel have to say about

Climate Change and Waste

and the question

How can Council work with the community to increase local capacity to act urgently on climate threats, and improve community resilience to extreme weather?

and the question

How can Council work with the community (residents and businesses) to drastically reduce the amount of waste going to landfill?



The community panel voted on priorities and made suggestions on ways to increase local capacity on climate change and reduce waste in Moreland.

Ranked opportunities

1. Offer incentives so that more people and businesses recycle more.
2. Programs to support businesses and industries to use renewable energy.



Climate Change and Waste

- Find and rent roof spaces to use them for solar panels (eg. supermarkets).

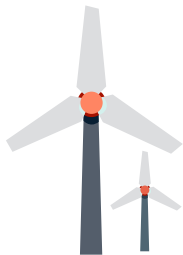


EARTH HOUR

- Add environmental sustainability information and action into community services and events.



- Support the community to reduce carbon emissions (including through using renewable energy, better insulated buildings, using environmentally friendly transport, recycling and repairing items before buying new things).



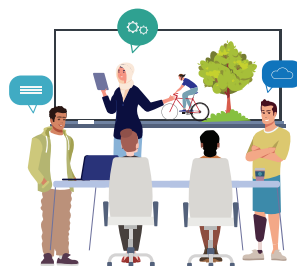
- Support the community to adapt to more sustainable options in their lives and homes, and to be able to live with climate change and extreme weather.



- Establish shops and other options to repair and recycle household items, rather than just buying new things.



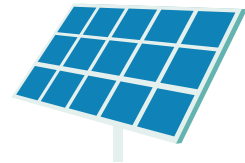
- Support and advocate for environmentally friendly ways of travelling (such as walking, bike riding, electric vehicles).



- Work with community groups that are already working and fighting for action on climate change.
- Work with community groups on events to promote how to fight for action on climate change, and to become more active ourselves.

Extra ideas and comments

- Share information about how options can have more benefits than just being environmentally friendly, like how some things can save money (solar power and not using a car often) or reduce noise (window insulation) etc.



- Support and encourage landlords to either install solar panels and insulation themselves, or approve such changes by renters.
- Think about different options for people with bigger and smaller budgets.
- Investigate options for shops and businesses to enter power purchase agreements.
- Find new ways to get the community informed and involved.
- Use different messages and options for different types of people and communities.
- Make it easy to understand and easy to do.