

# DUNSTAN RESERVE PROPOSED 2021 PARK UPGRADE DRAFT LANDSCAPE PLAN

In 2021, as part of Moreland's Play Strategy implementation, Council will be renewing the playground and undertaking improvements at Dunstan Reserve on Peacock Street in Brunswick West.

This draft concept plan for the playground has been designed in response to the feedback from the local community. The design will include, contemporary timber play equipment with a central play unit, slide, clatter bridge, tunnel and roofing with a small trampoline, swings (including a basket swing and an 'expression swing') and a water play pump and channel surrounding the main structure. The design will also include a variety of nature play opportunities, rocks, logs, recycled materials, animal play sculptures, balance beams and posts. We have also included a 'Bouldering Unit' for adventurous climbers!

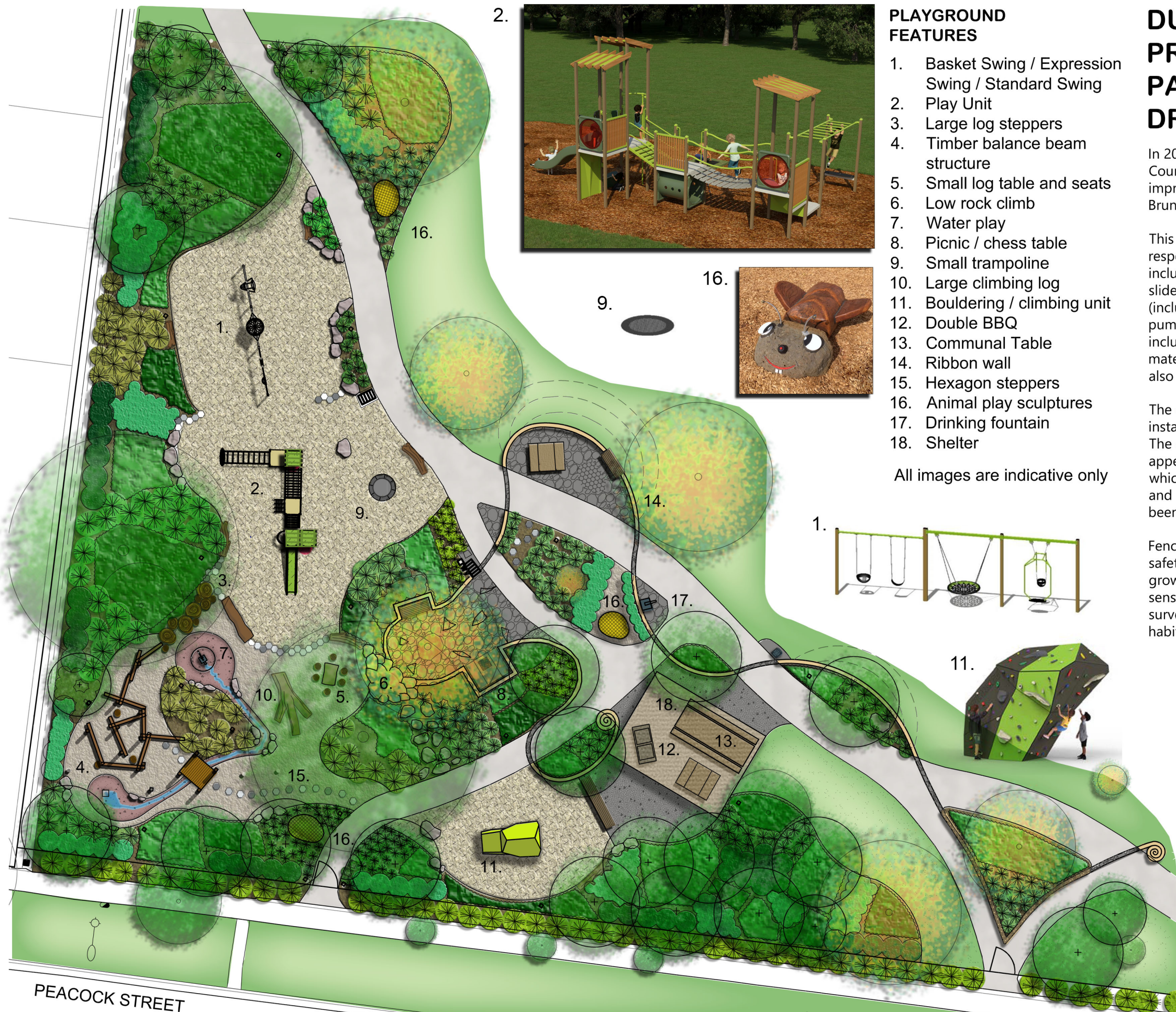
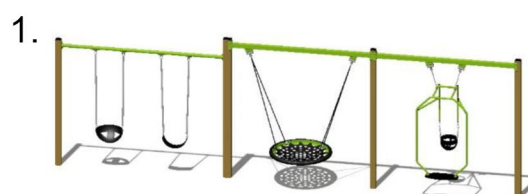
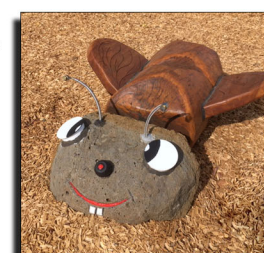
The existing single BBQ will be replaced with a new double BBQ, installed beneath a large shelter, incorporating a long communal table. The existing curved retaining walls have been linked in a 'ribbon-like' appearance by including additional low walls and flat 'crazy-pave' strips, which will complement the existing mosaic and stone paving. Seating and picnic tables (including one with inset chess/checkers board) have been incorporated throughout the playground.

Fencing will be provided along the southern boundary to improve safety and prevent small children wandering onto the roadway. Low growing garden beds throughout the playground will increase amenity, sensory experiences, and play value whilst allowing for good surveillance. Additional native trees that will increase shade and bird habitat will also be planted.

## PLAYGROUND FEATURES

1. Basket Swing / Expression Swing / Standard Swing
2. Play Unit
3. Large log steppers
4. Timber balance beam structure
5. Small log table and seats
6. Low rock climb
7. Water play
8. Picnic / chess table
9. Small trampoline
10. Large climbing log
11. Bouldering / climbing unit
12. Double BBQ
13. Communal Table
14. Ribbon wall
15. Hexagon steppers
16. Animal play sculptures
17. Drinking fountain
18. Shelter

All images are indicative only



Residents and the wider community are invited to submit feedback on the proposals shown in this concept plan. Please contact Wendy Skala, Landscape Architect, at Moreland City Council to provide comment or ask for more information. Email [wskala@moreland.vic.gov.au](mailto:wskala@moreland.vic.gov.au) or telephone 8311 4392. Please provide feedback by Thursday 17th June, 2021. The concept plan will be revised subject to feedback received. Completion of this upgrade is planned prior to September 2021.

JOIN THE  
CONVERSATION



Scale 1:250 @ A3

